

## Area Map

### Legend

- Roads
- Rivers
- Installation Boundary
- Phenix City
- Columbus
- Counties
- States

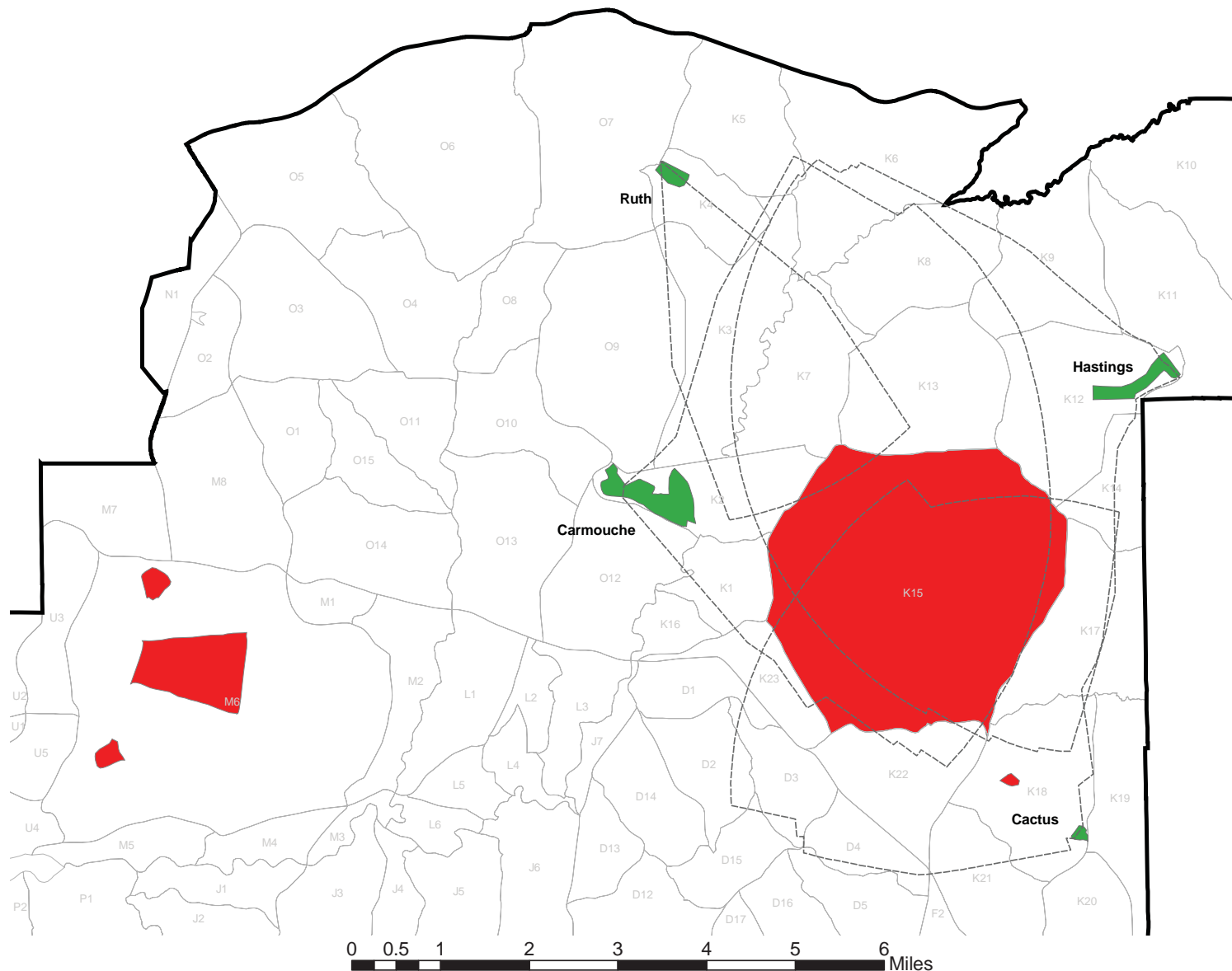
N  
1:860,000

Ft. Benning Location Map



Prepared by DFEL  
Environmental Management Division  
Fort Benning, GA  
November 2003

**Figure 1**



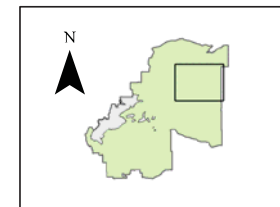
## Ruth, Carmouche, Cactus, Hastings Ranges

### Legend

- Military Ranges
- SDZs
- Installation Boundary
- Training Compartments
- Duded Impact Area

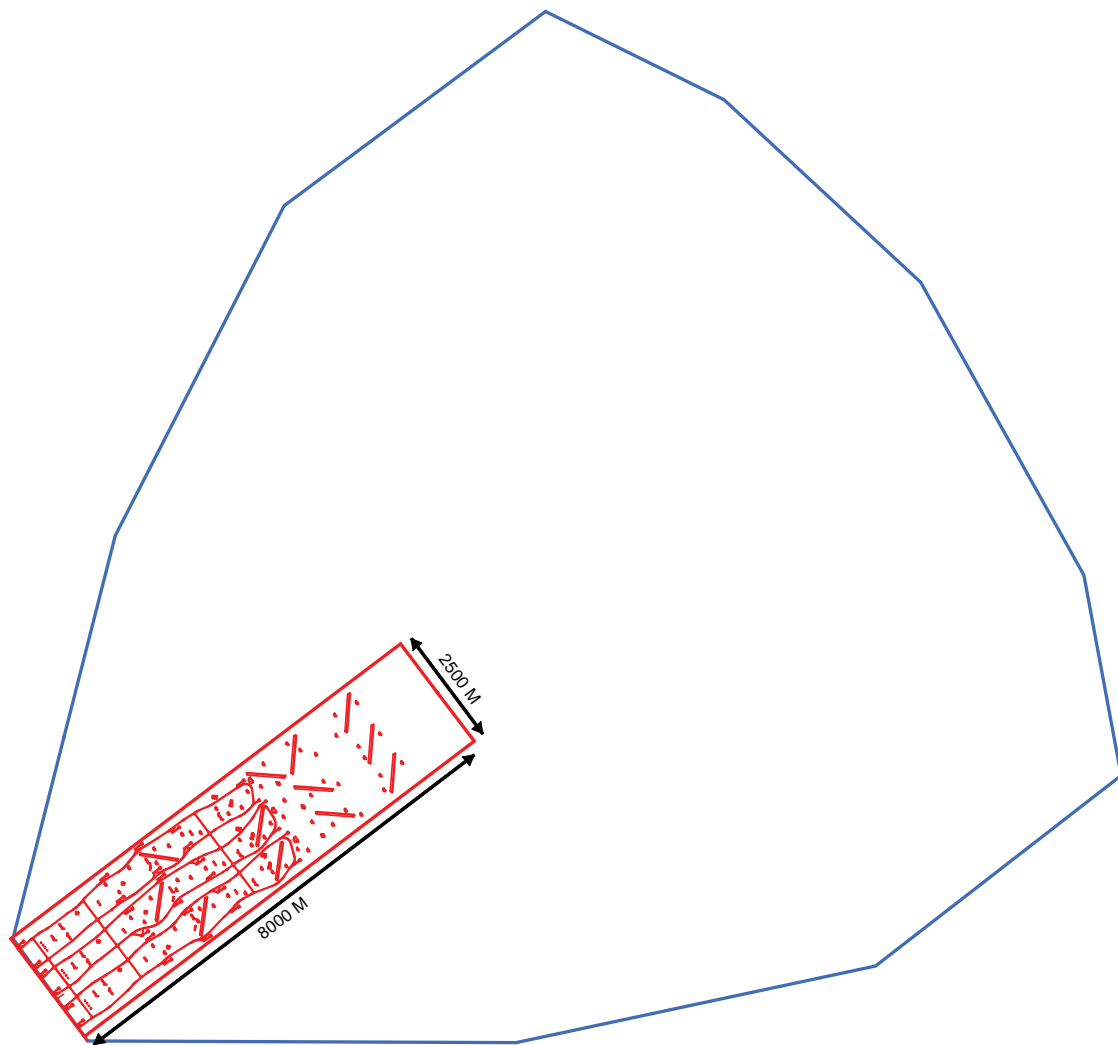
1:73,000

Ft. Benning Location Map





Prepared by DPW  
Environmental Management Division  
Fort Benning, GA  
April 2004

**Figure 2**



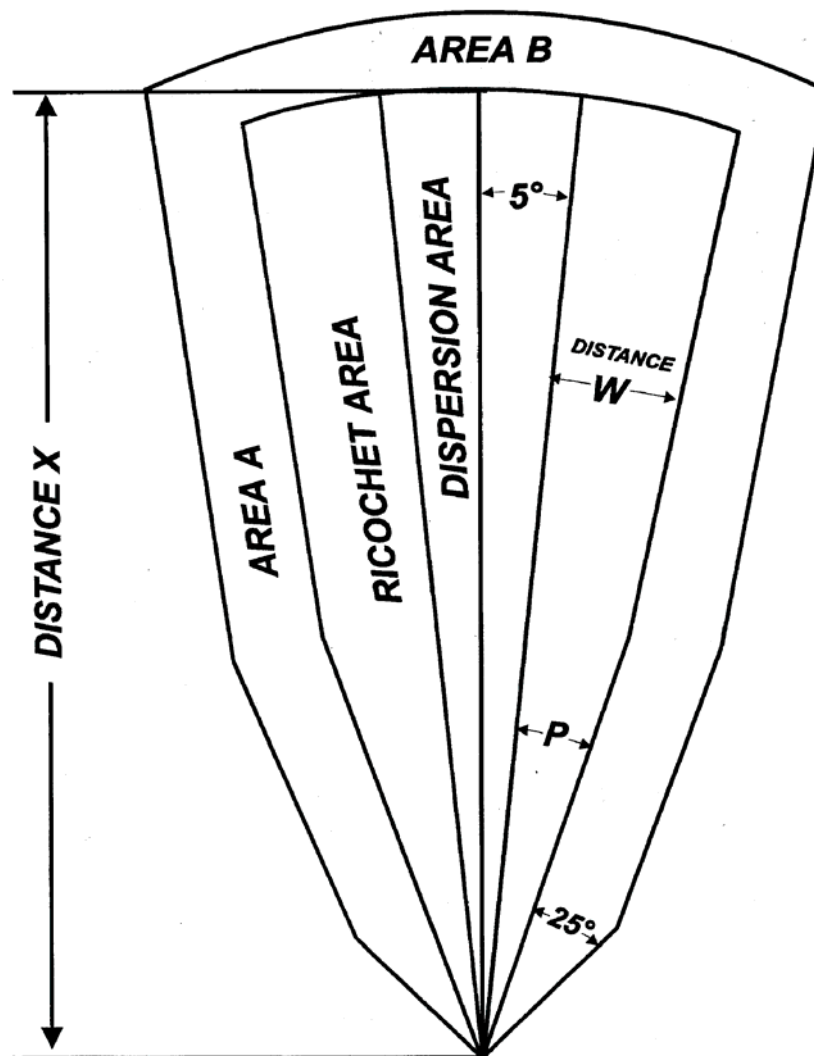
### Optimal Standard DMPRC Design

#### Legend

-  Optimal Standard  
DMPRC Range Footprint
-  Optimal Standard DMPRC SDZ

Prepared by DPW  
Environmental Management Division  
Fort Benning, GA  
April 2004

**Figure 3**

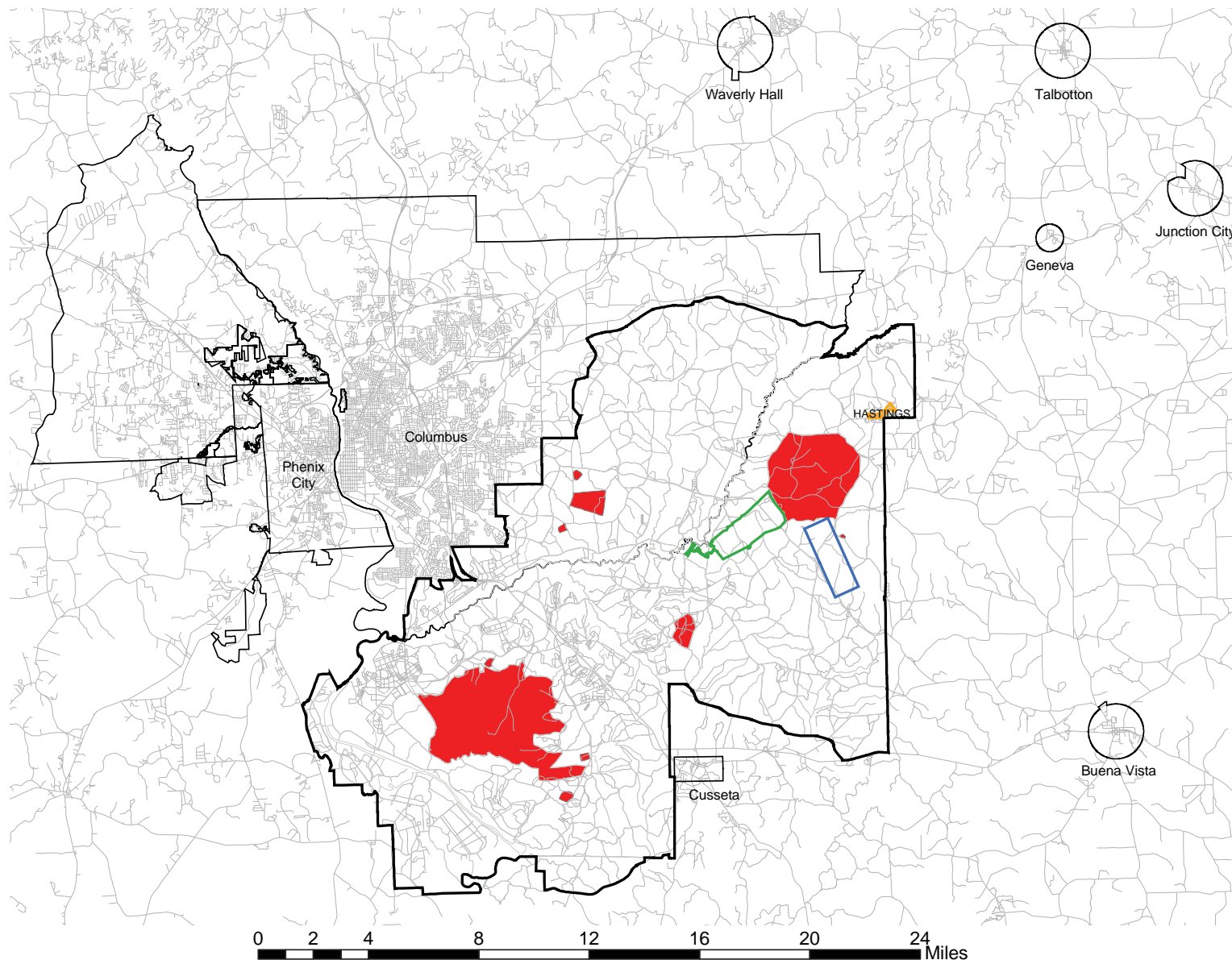


# **Standard SDZ Layout**

Prepared by DPW  
Environmental Management Division  
Fort Benning, GA  
April 2004

**Figure 4**





## Alternatives I, II, and III

### Legend

- Alternative I/Hastings Range Footprint
- Alternative II Range Footprint
- Alternative III Range Footprint
- Installation Boundary
- Training Compartments
- Cities
- Roads

N  
1:230,000

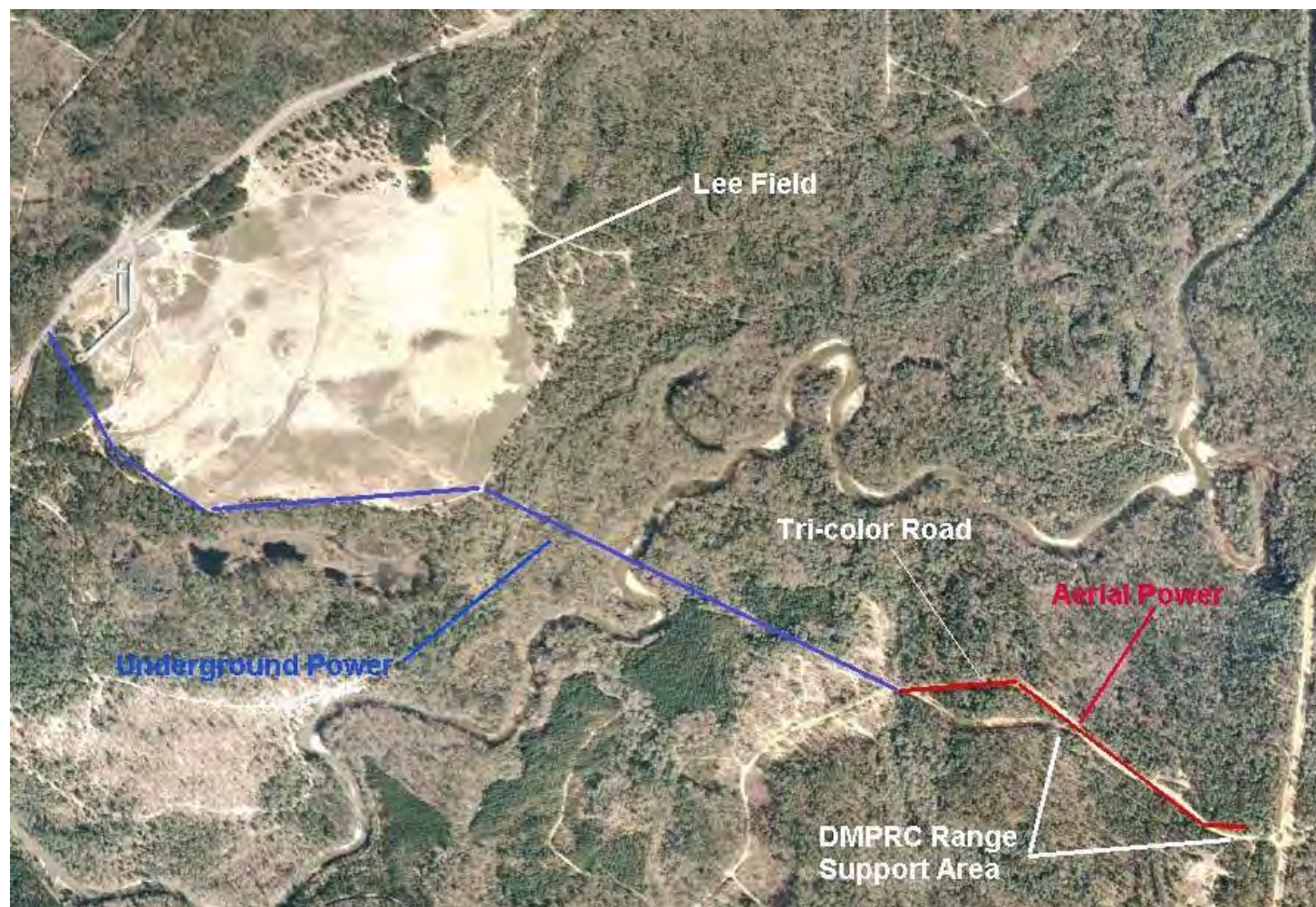
Ft. Benning Location Map



Prepared by DPW  
Environmental Management Division  
Fort Benning, GA  
April 2004

**Figure 5**

### DMPRC Alternative III Proposed Alternate Route for Electrical Power



**Underground  
Electrical  
Service  
(Proposed)**

Prepared by DPW  
Environmental Management Division  
Fort Benning, GA  
April 2004

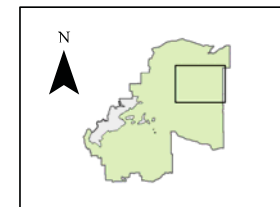
**Figure 6**



## Legend

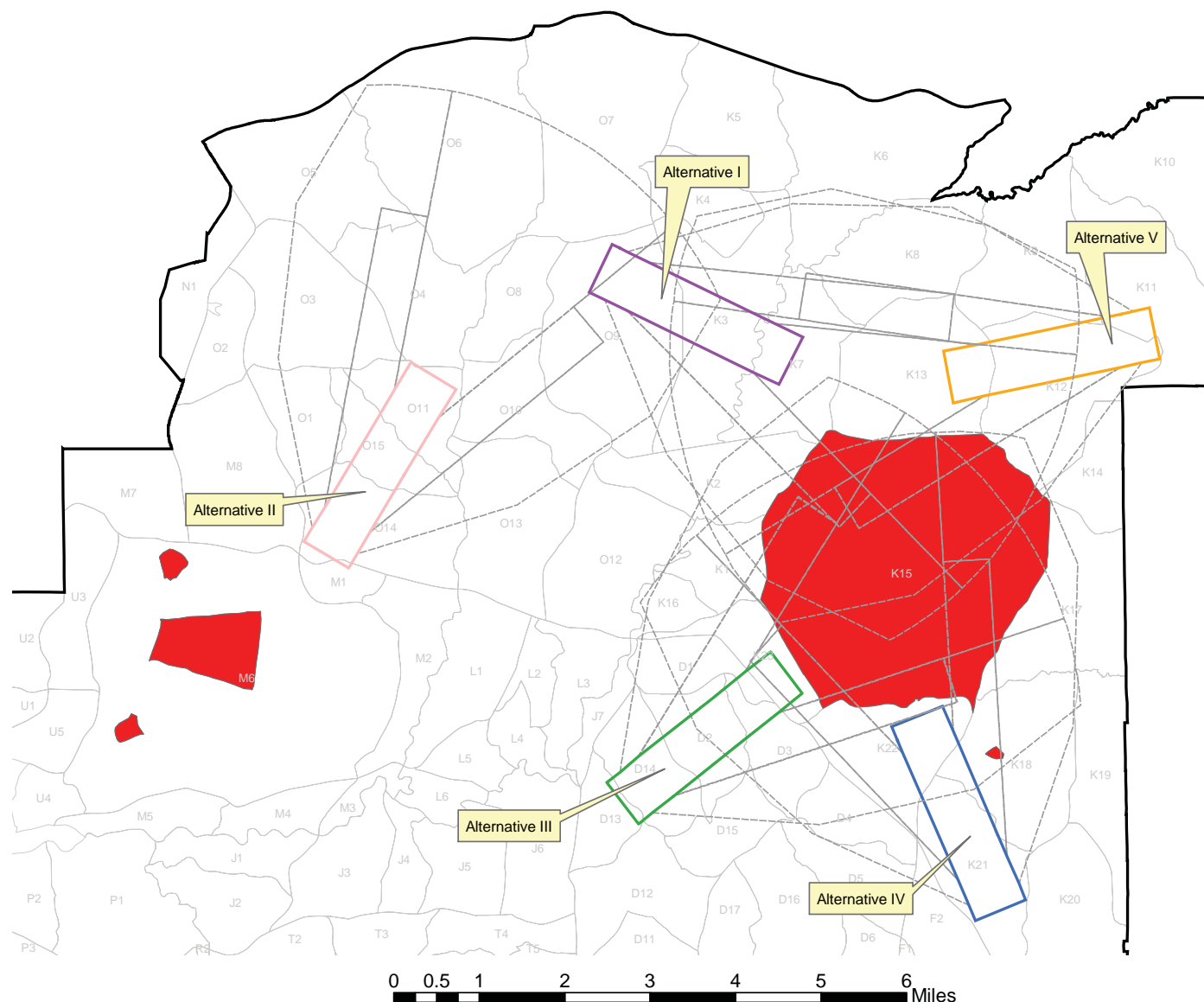
- 1:78,300

Ft. Benning Location Map



Prepared by DFEL  
Environmental Management Division  
Fort Benning, GA  
November 2003

### Figure 7



# Soils on Fort Benning

## Legend

- Installation Boundary
- Training Compartments

### Soils

|     |      |      |
|-----|------|------|
| AaB | FuB  | RbA  |
| AaC | FuC  | RvA  |
| AnA | Hy   | SeA  |
| BaA | LaB  | SuB  |
| Bb  | LaC  | SuC  |
| BbC | LaOm | TSD  |
| BrA | LaD  | TVD  |
| COC | LaE  | To   |
| COD | LaF  | TiB  |
| Caa | LuB  | TiC  |
| CaB | LuC  | TiD  |
| CaC | Nac  | TiE  |
| Ch  | NbB  | Ua   |
| Ch  | NbC  | Ub   |
| Ch  | NbD  | Uc   |
| Ch  | NbE  | Ud   |
| CwE | NbF  | UeC  |
| Dga | Oc   | Uc   |
| Dgb | OrA  | VbC2 |
| Dgc | OrB  | VbC  |
| Dgd | OrC  | VbD  |
| EOD | OrD  | W    |
| EPE | OrE  | WaB  |
| EmB | OrF  | WaC  |
| EmC | OrG  | WaD  |
| EmD | Pm   | WbA  |
| EmE | Ps   | WbB  |
| EIA | Pt   | WbC  |
| EIA | RaA  | WbD  |
|     |      | none |



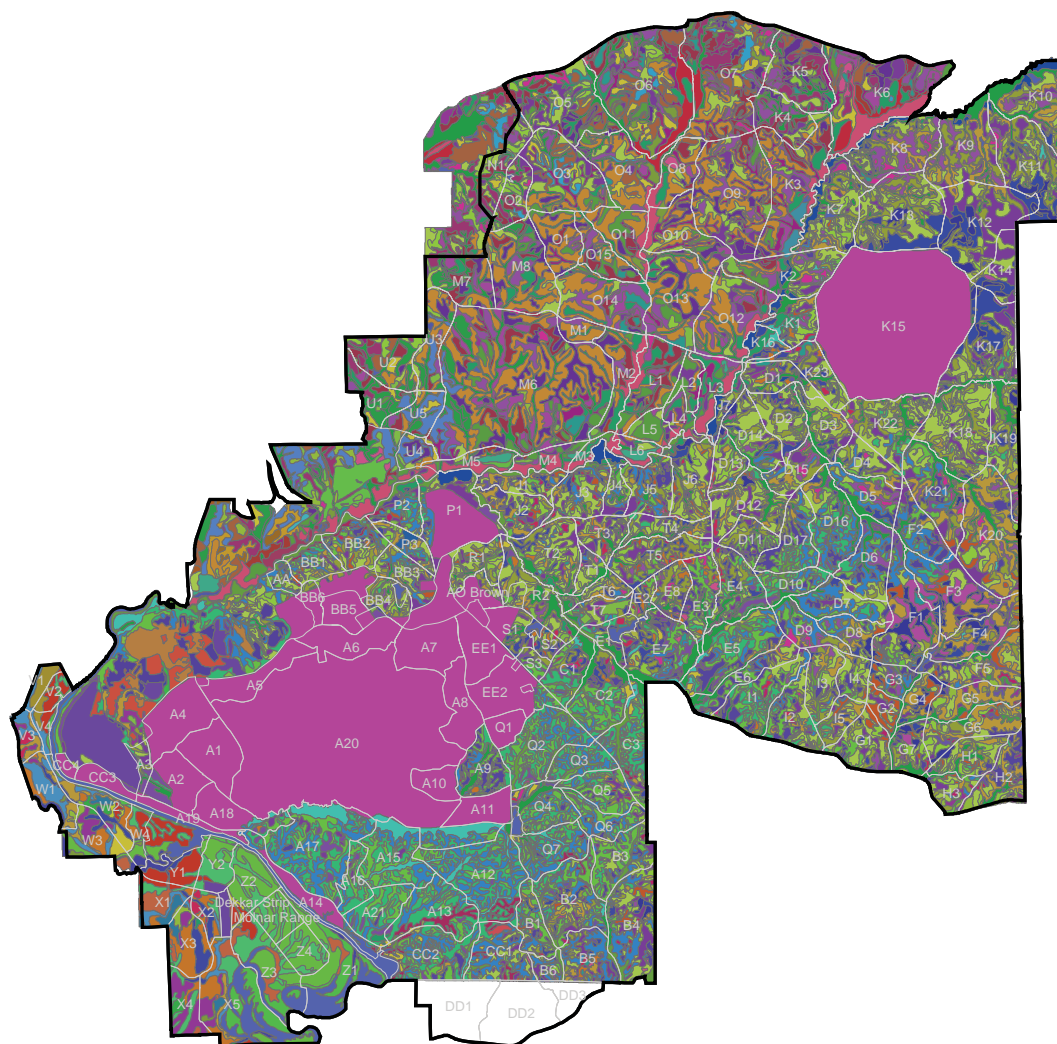
1:165,000

Ft. Benning Location Map

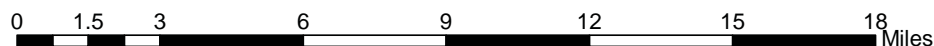
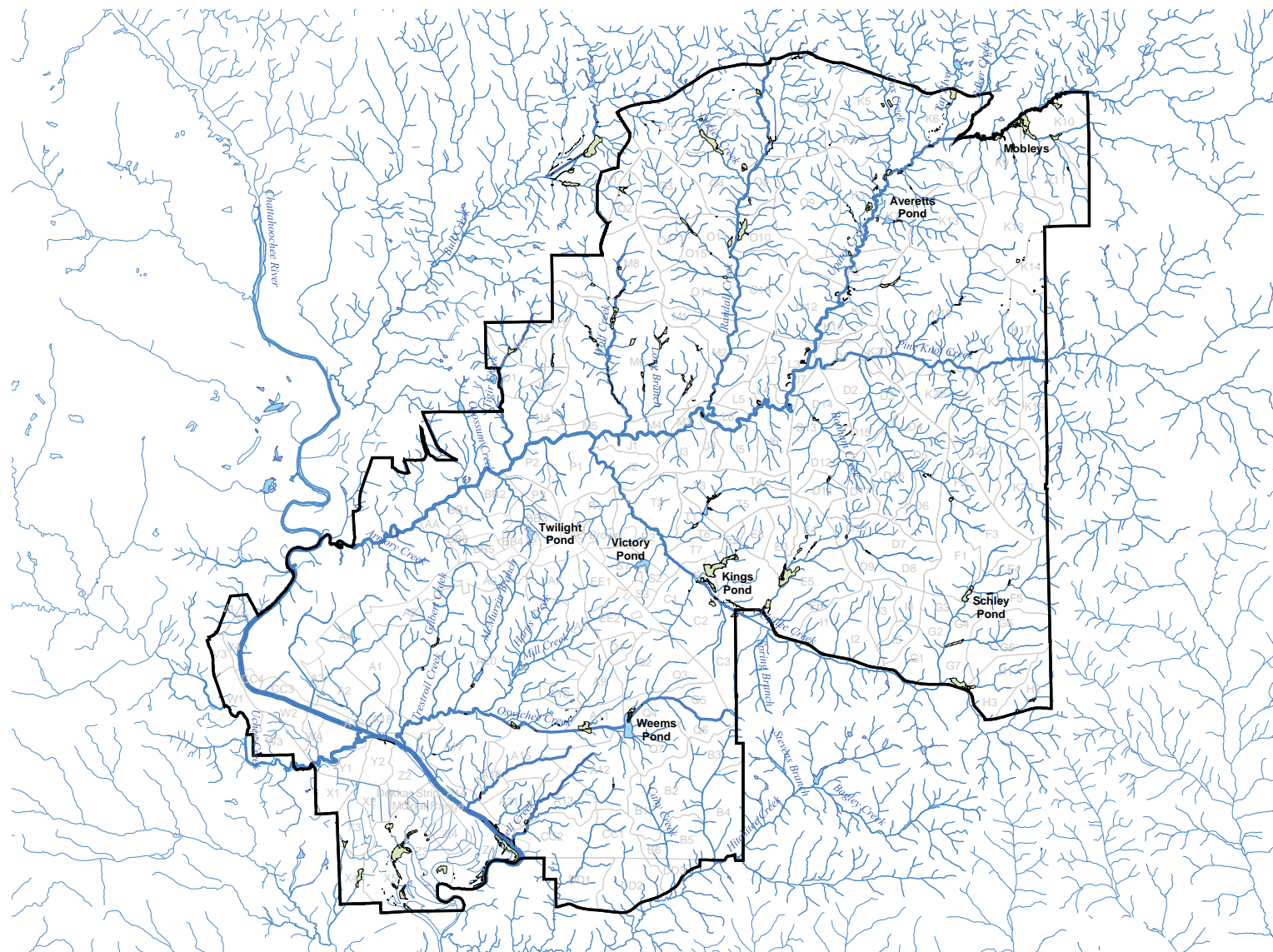


Prepared by DFEL  
Environmental Management Division  
Fort Benning, GA  
November 2003

**Figure 8**



0 1.5 3 6 9 12 15 18 Miles



## Surface Water on Fort Benning

### Legend

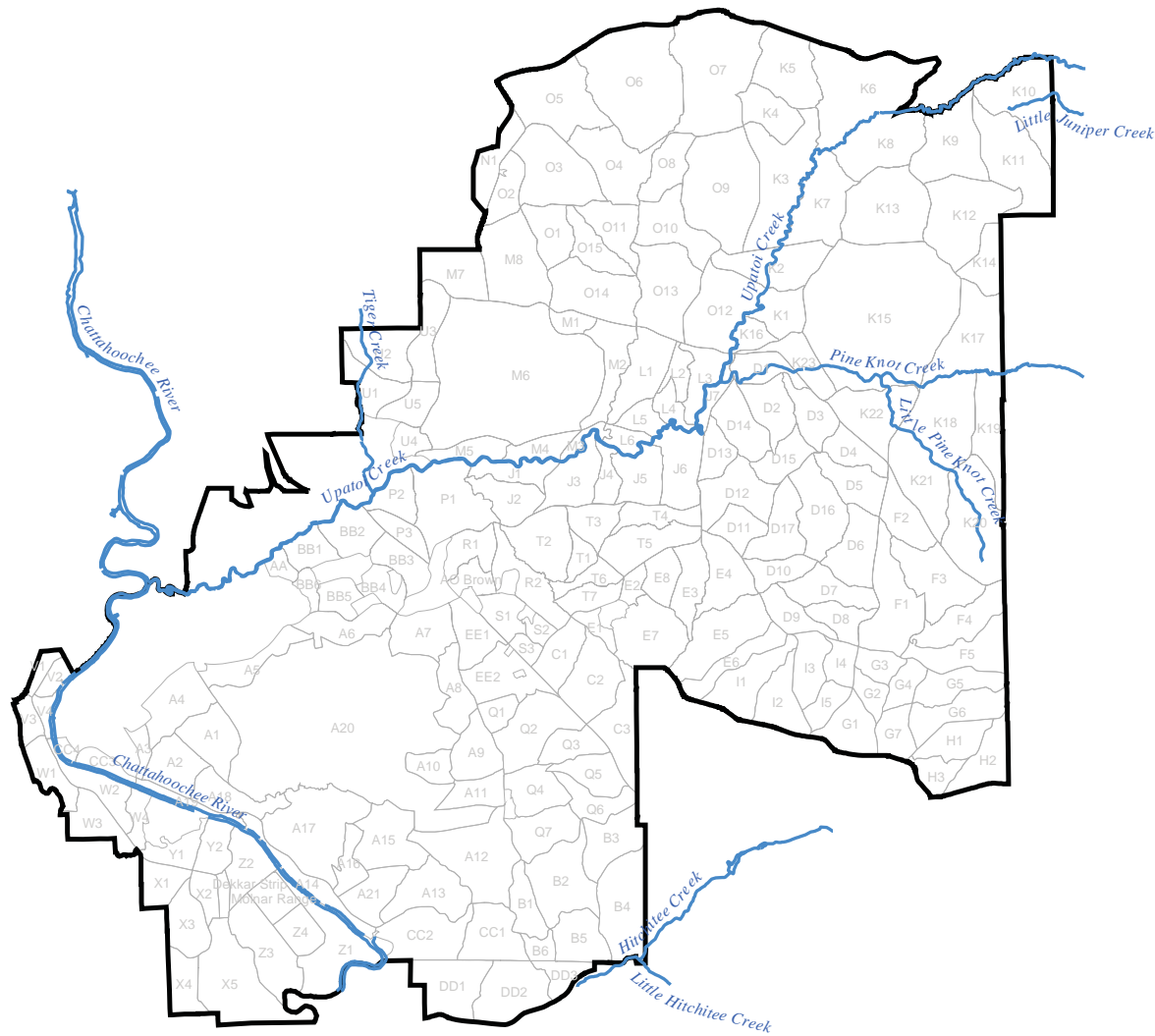
- Installation Boundary
- Training Compartments
- Ponds
- Lakes
- Rivers and Streams

N  
1:165,000  
Ft. Benning Location Map

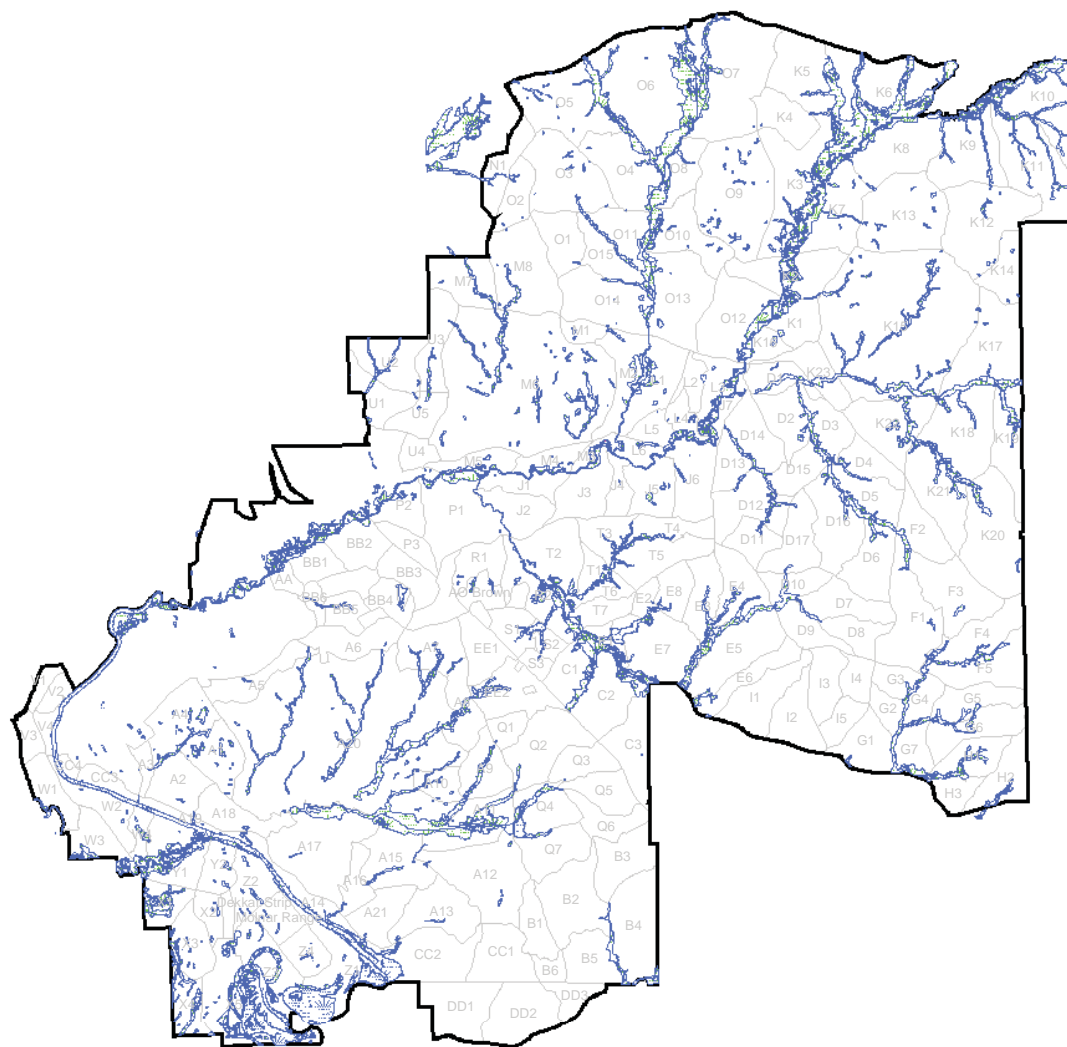


Prepared by DFEL  
Environmental Management Division  
Fort Benning, GA  
November 2003

**Figure 9**











## Wetlands on Fort Benning

### Legend

#### Wetlands

-  riverine
-  palustrine
-  lacustrine

-  Installation Boundary
-  Training Compartments

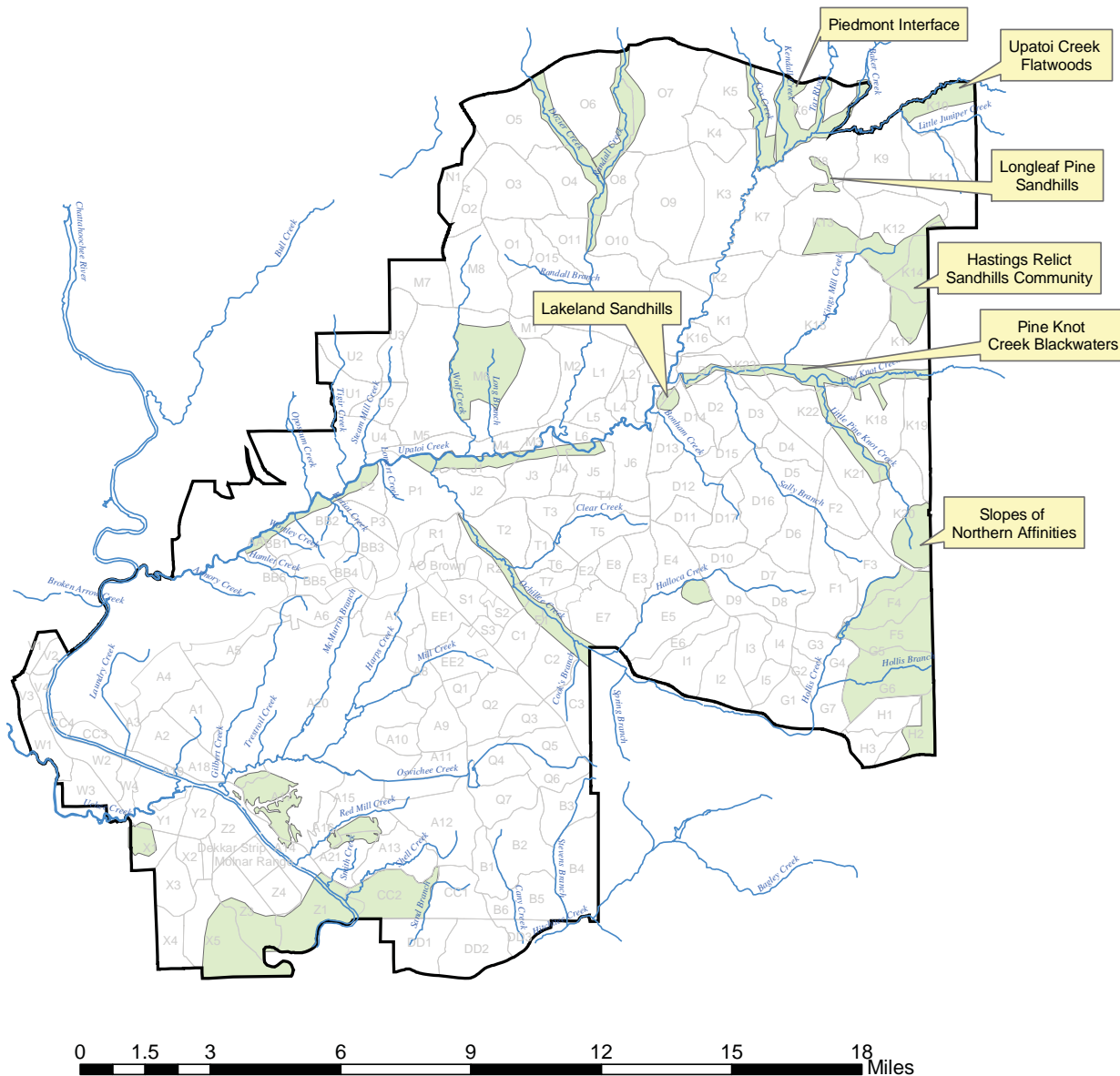
N  
1:165,000  
Ft. Benning Location Map



Prepared by DFEL  
Environmental Management Division  
Fort Benning, GA  
November 2003

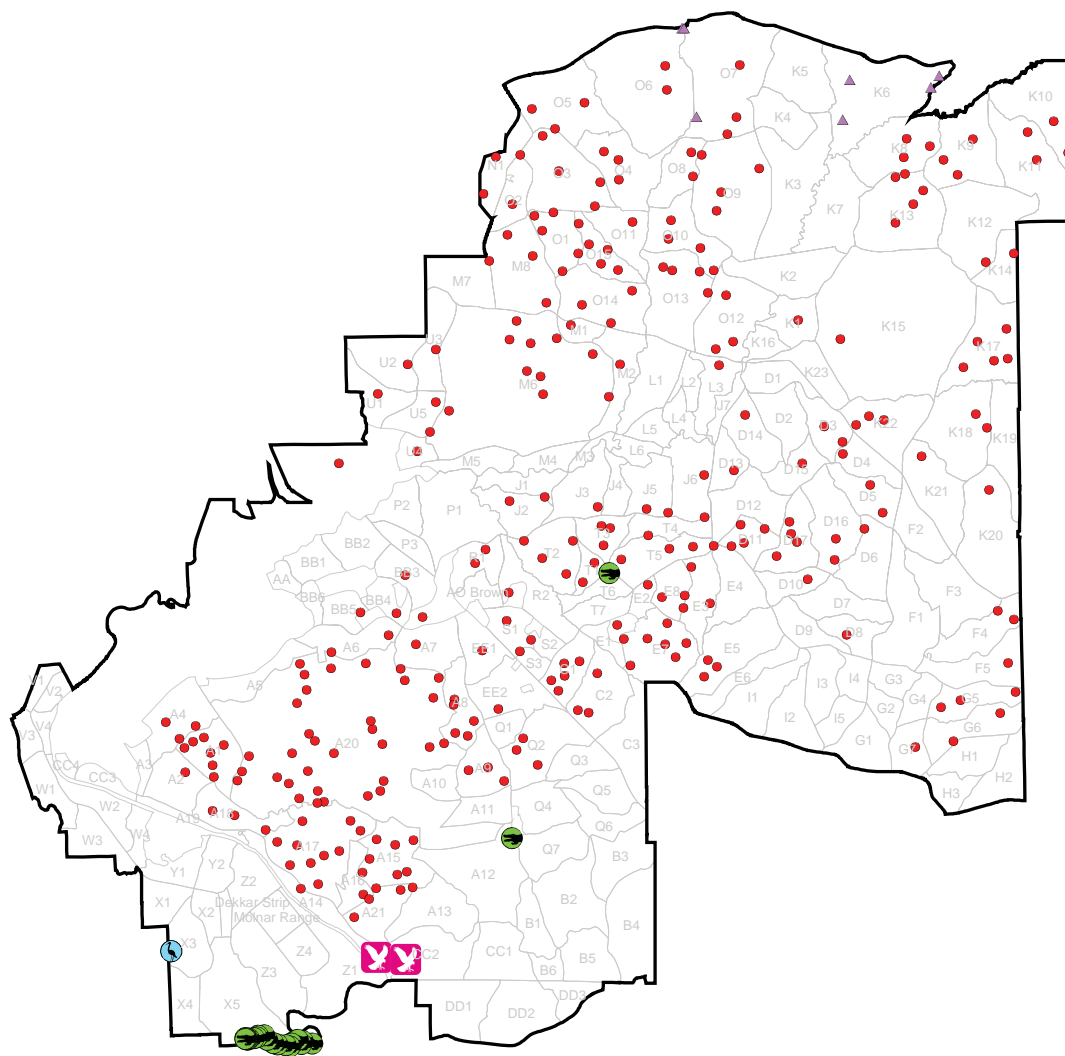
0 1.5 3 6 9 12 15 18 Miles

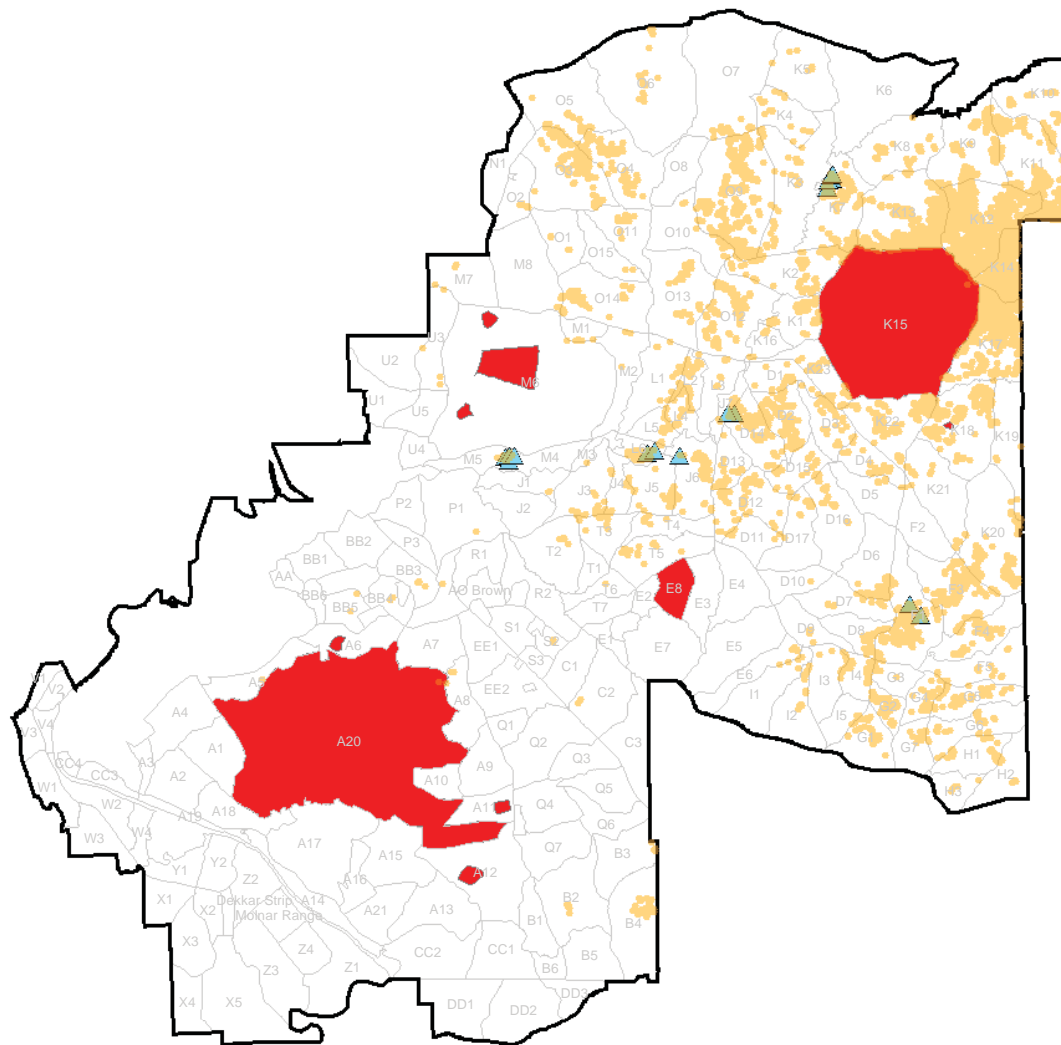
**Figure 11**



**Figure 12**













## State Protected Species on Fort Benning

### Legend

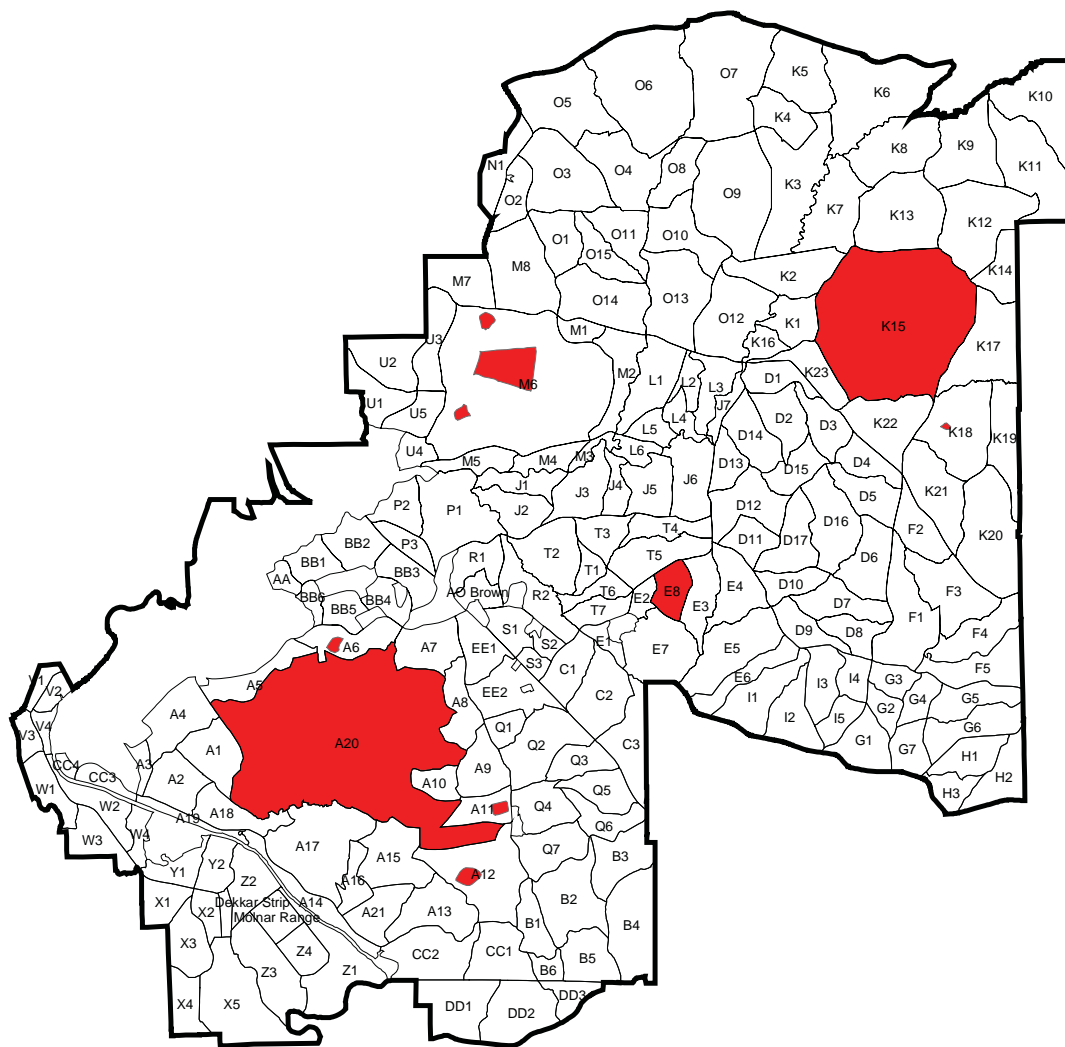
-  Pickering's morning-glory
-  Indian olive
-  Gopher Tortoise Burrows
-  Installation Boundary
-  Training Compartments
-  Dudded Impact Area

N  
1:165,000  
Ft. Benning Location Map






Prepared by DPW  
Environmental Management Division  
Fort Benning, GA  
April 2004

**Figure 14**



## Fort Benning Training Areas

### Legend

-  Installation Boundary
-  Training Compartments
-  Duded Impact Area

N  
1:165,000  
Ft. Benning Location Map



Prepared by DFEL  
Environmental Management Division  
Fort Benning, GA  
November 2003

**Figure 15**

0 1.5 3 6 9 12 15 18 Miles





0 0.15 0.3 0.6 0.9 1.2 1.5 1.8 Miles

## Soils and Vegetation - Alternative I

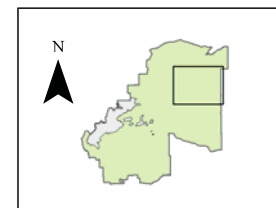
### Legend

- Alternative I/Hastings Range Footprint
- Installation Boundary
- Training Compartments
- Dudded Impact Area

### Orthophoto

1:16,000

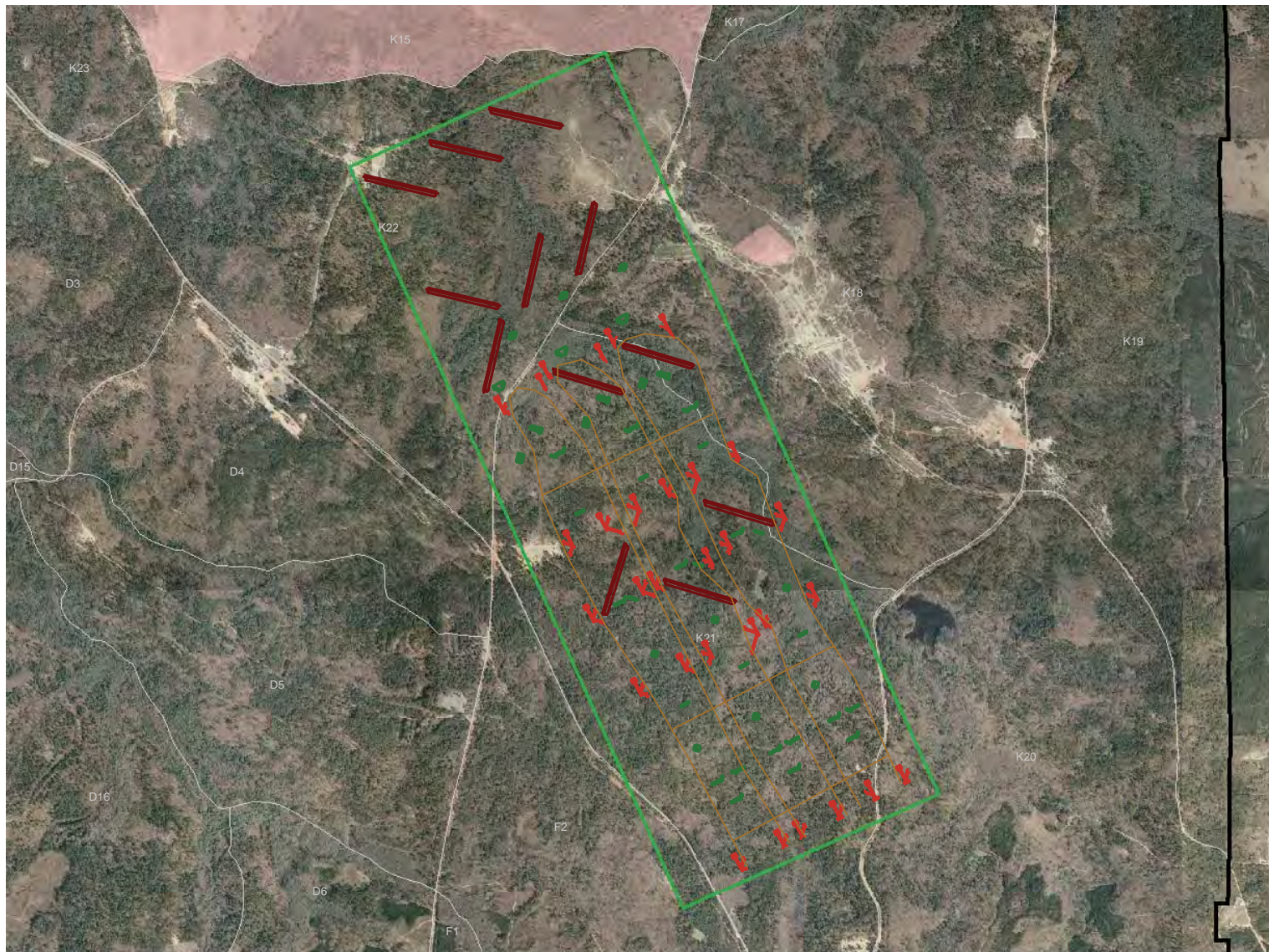
Ft. Benning Location Map



Prepared by DFEL  
Environmental Management Division  
Fort Benning, GA  
November 2003

**Figure 16**





## Soils and Vegetation - Alternative II

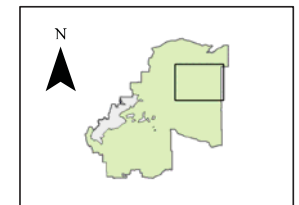
### Legend

- Alternative II Range Footprint
- Installation Boundary
- Training Compartments
- Duded Impact Area

### Orthophoto

1:22,000

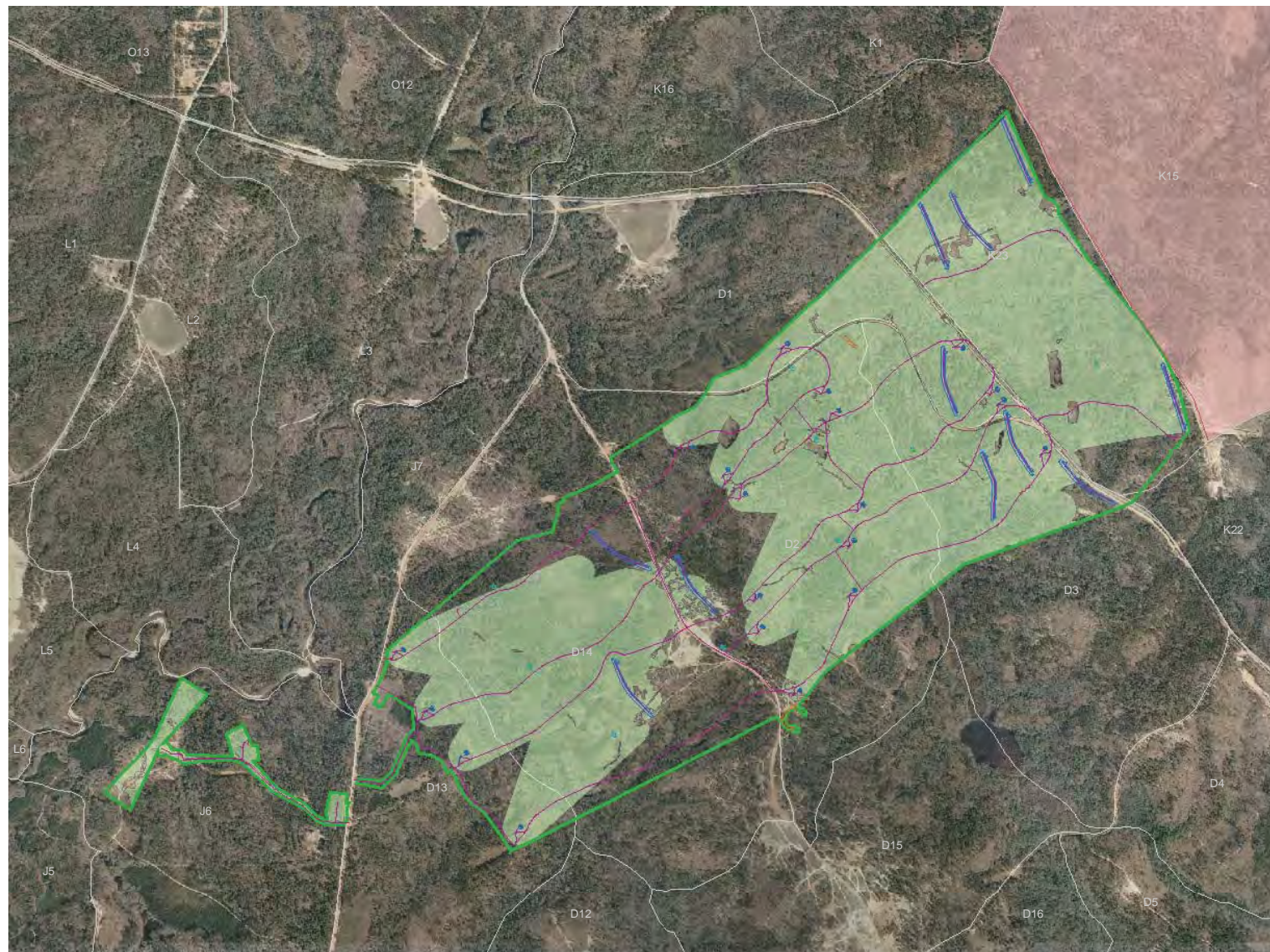
Ft. Benning Location Map



Prepared by DPW  
Environmental Management Division  
Fort Benning, GA  
April 2004

**Figure 17**





0 0.2 0.4 0.8 1.2 1.6 2 2.4 Miles

### Soils and Vegetation - Alternative III

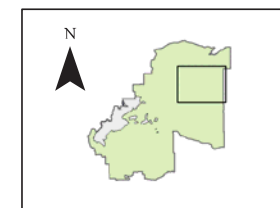
#### Legend

- Alternative III Range Footprint
- Tree Removal Area
- Training Compartments
- Dudded Impact Area

#### Orthophoto

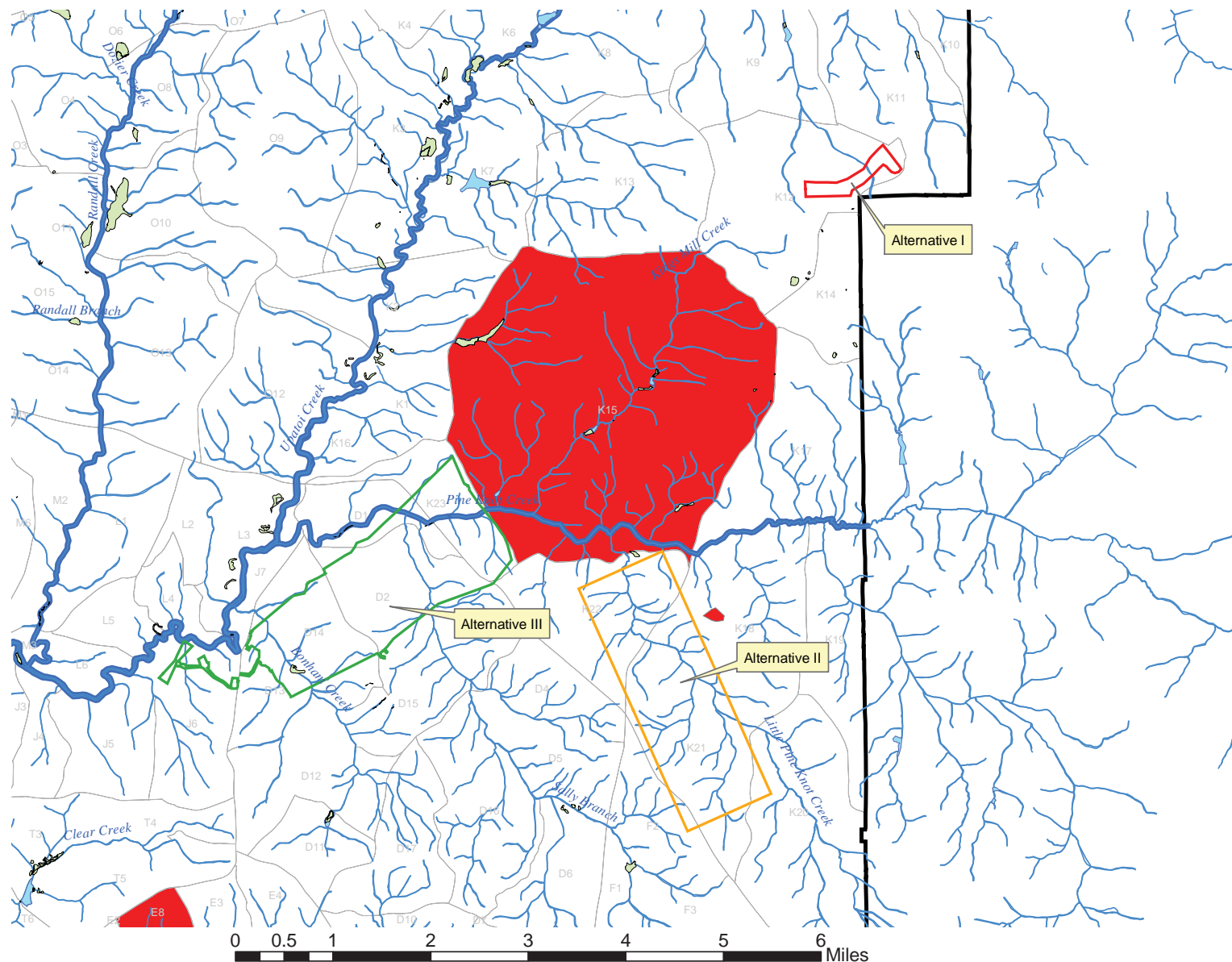
1:22,000

Ft. Benning Location Map



Prepared by DPW  
Environmental Management Division  
Fort Benning, GA  
April 2004

**Figure 18**

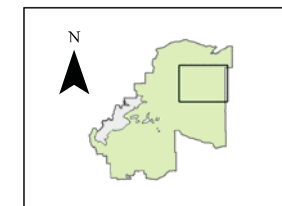


### Water Quality, All Alternatives Legend

- Ponds
- Lakes
- Rivers and Streams
- Alternative I/Hastings Range Footprint
- Alternative II Range Footprint
- Alternative III Range Footprint
- Installation Boundary
- Training Compartments
- Alternative III Range Footprint

1:65,000

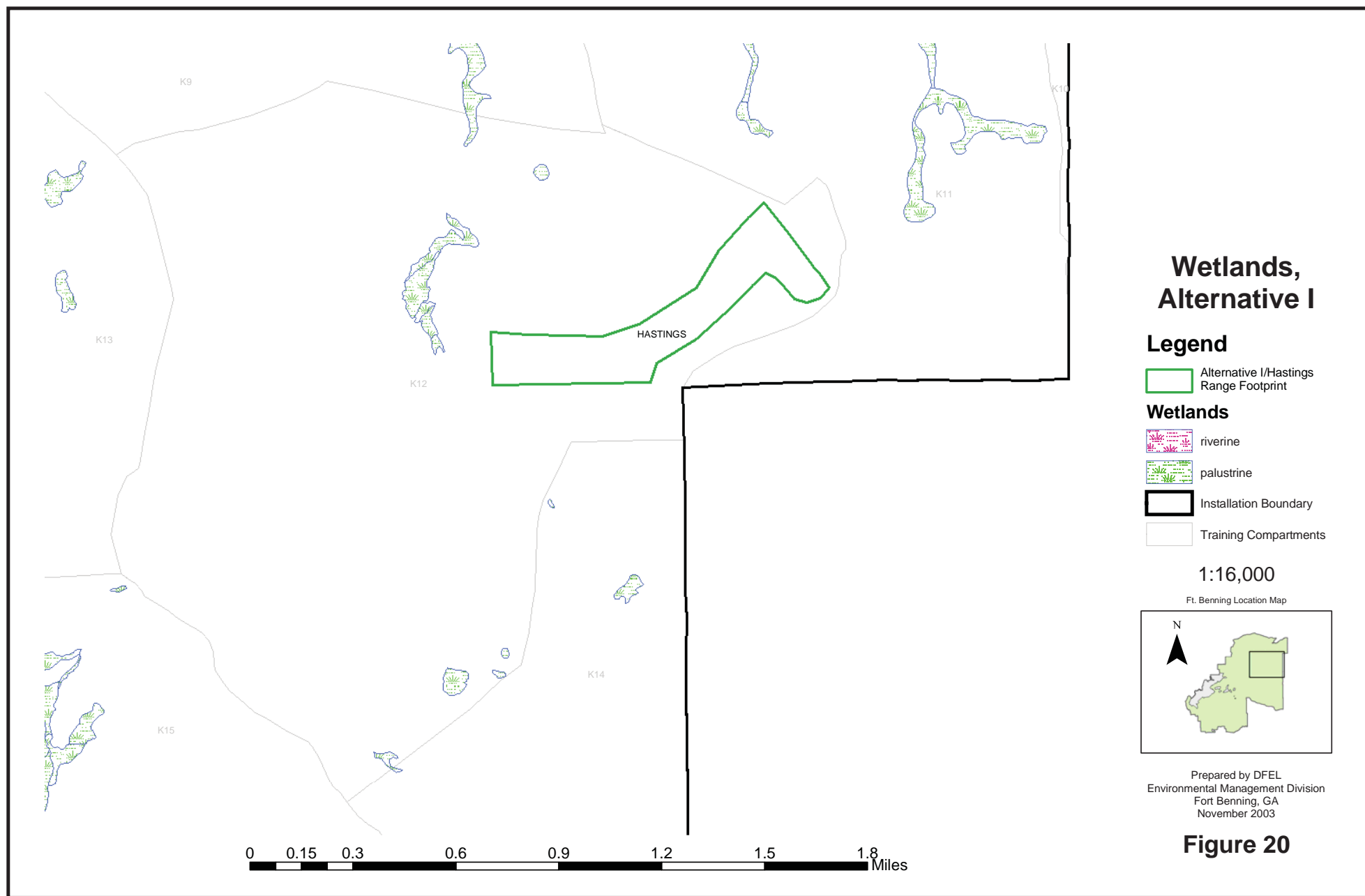
Ft. Benning Location Map



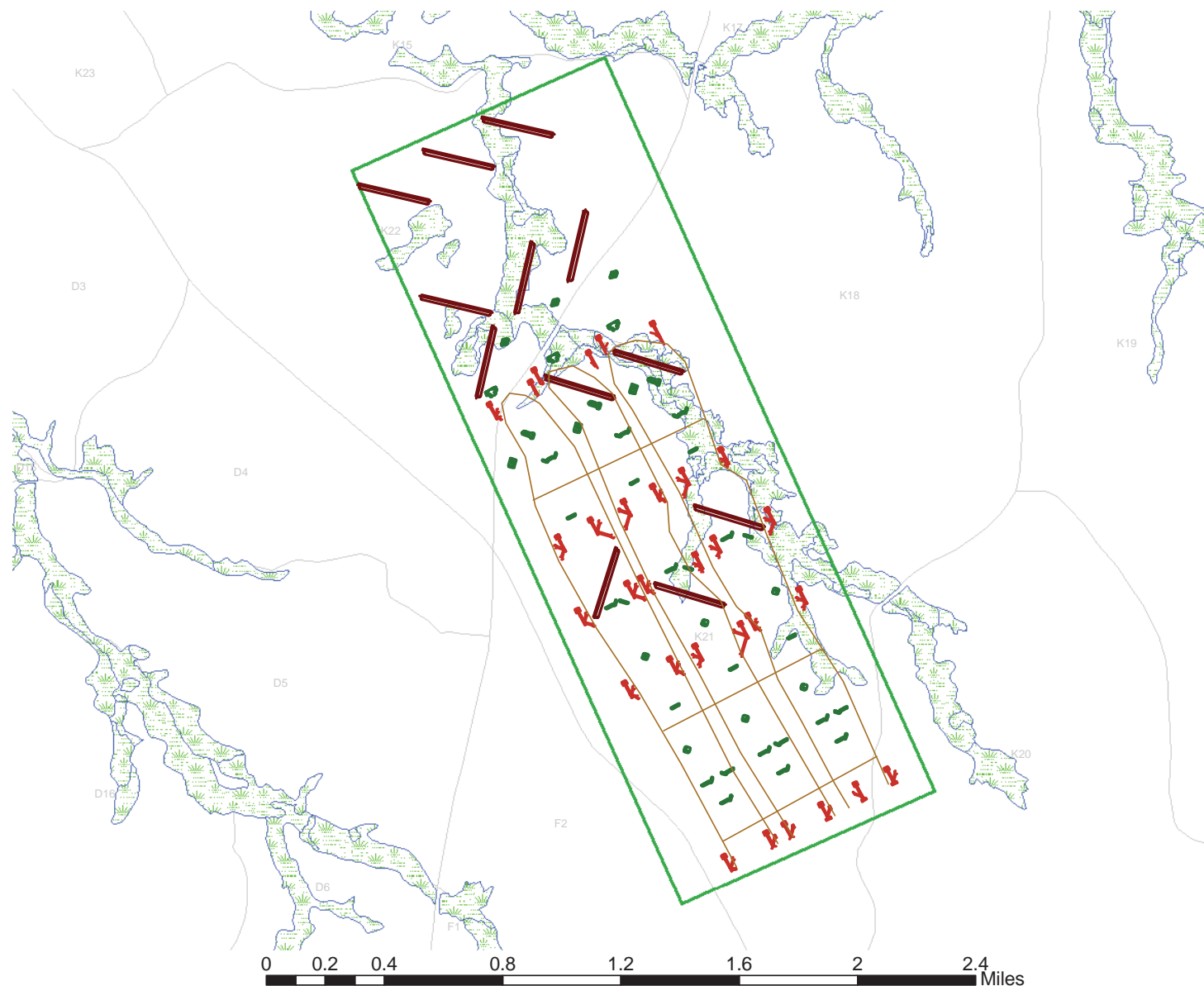
Prepared by DPW  
Environmental Management Division  
Fort Benning, GA  
April 2004

**Figure 19**









## Wetlands, Alternative II

### Legend

Alternative II Range Footprint

### Wetlands

riverine

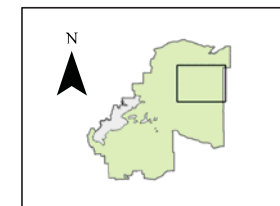
palustrine

Installation Boundary

Training Compartments

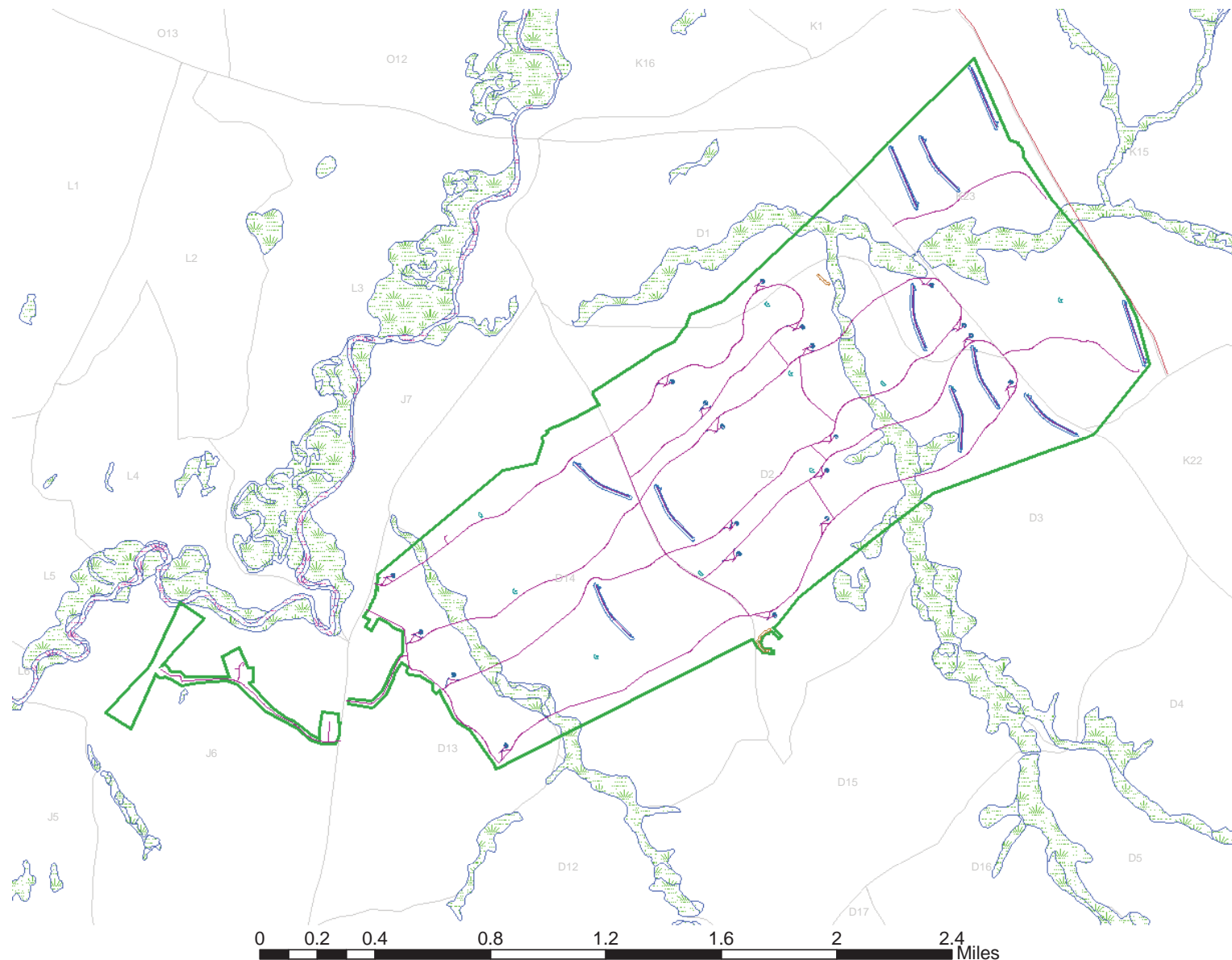
1:22,000

Ft. Benning Location Map



Prepared by DPW  
Environmental Management Division  
Fort Benning, GA  
April 2004

**Figure 21**



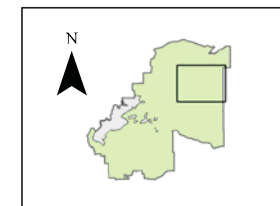
## Wetlands, Alternative III

### Legend

- Alternative III Range Footprint
- riverine
- palustrine
- Installation Boundary
- Training Compartments

1:22,000

Ft. Benning Location Map




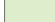


Prepared by DPW  
Environmental Management Division  
Fort Benning, GA  
April 2004

**Figure 22**

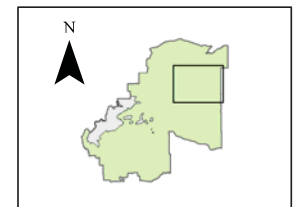
## Unique Ecological Areas - Alternative I

### Legend

-  Alternative I/Hastings Range Footprint
-  Installation Boundary
-  Training Compartments
-  Unique Ecological Areas

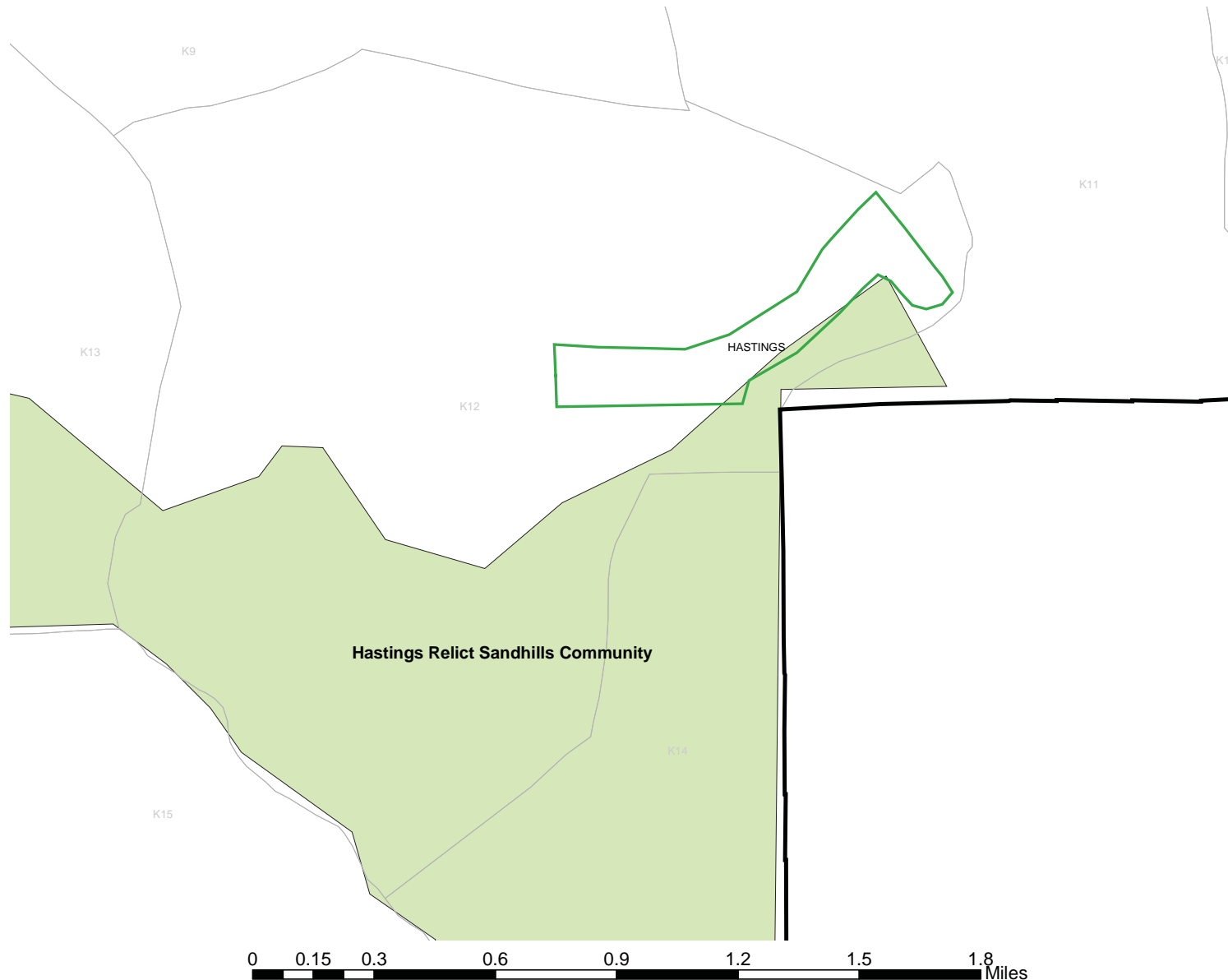
1:16,000

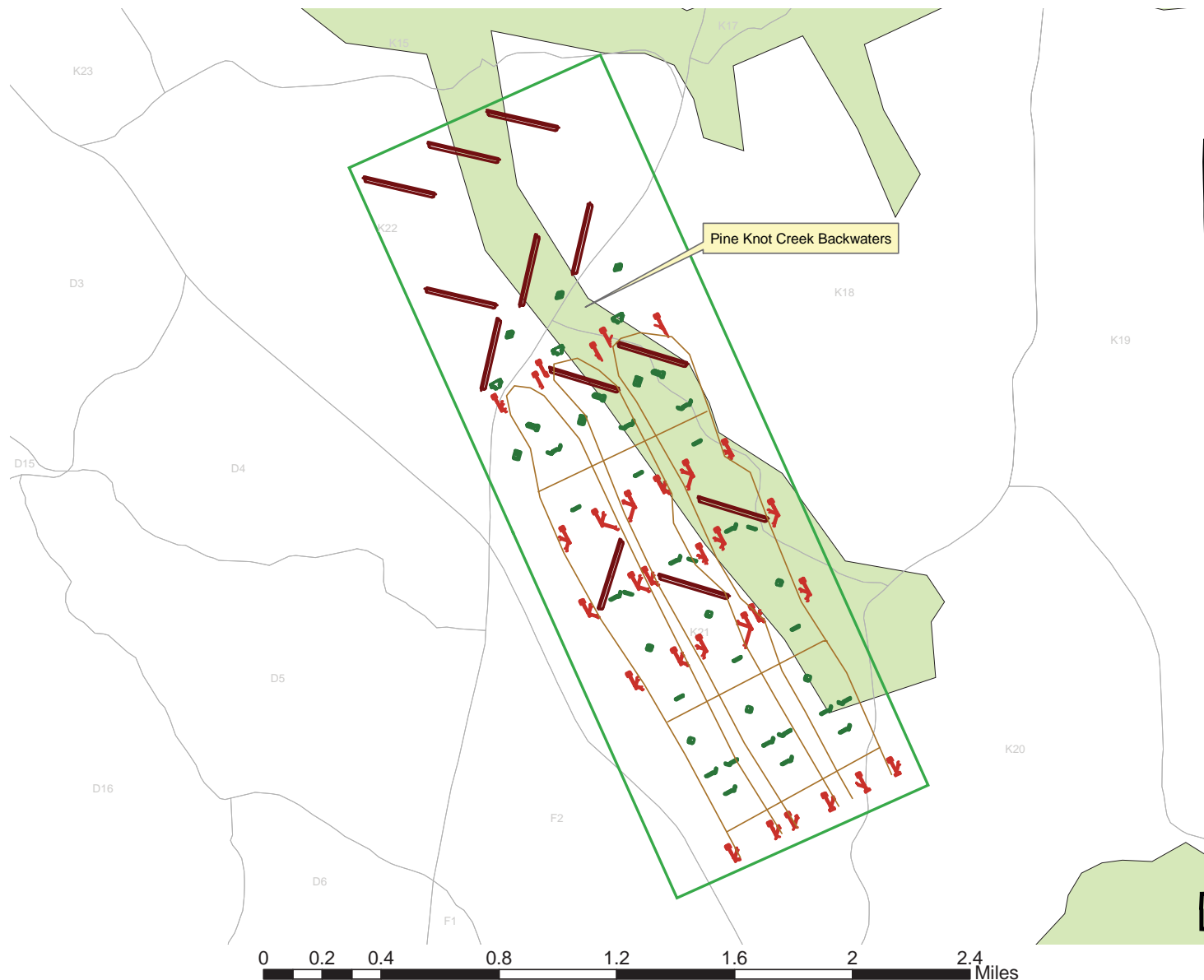
Ft. Benning Location Map



Prepared by DFEL  
Environmental Management Division  
Fort Benning, GA  
November 2003

**Figure 23**





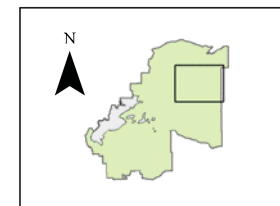
## Unique Ecological Areas - Alternative II

### Legend

-  Alternative II Range Footprint
-  Installation Boundary
-  Training Compartments
-  Unique Ecological Areas

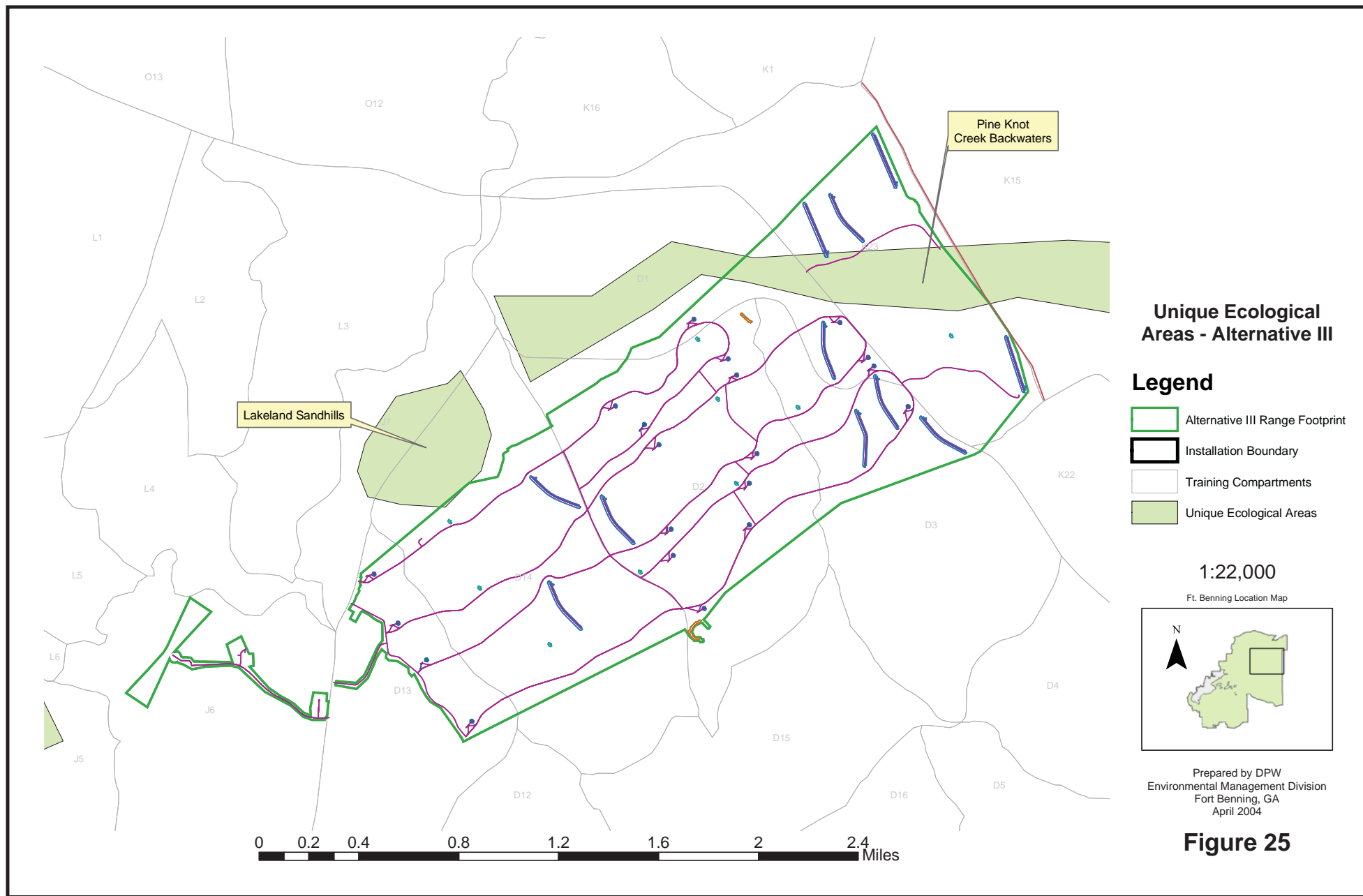
1:22,000

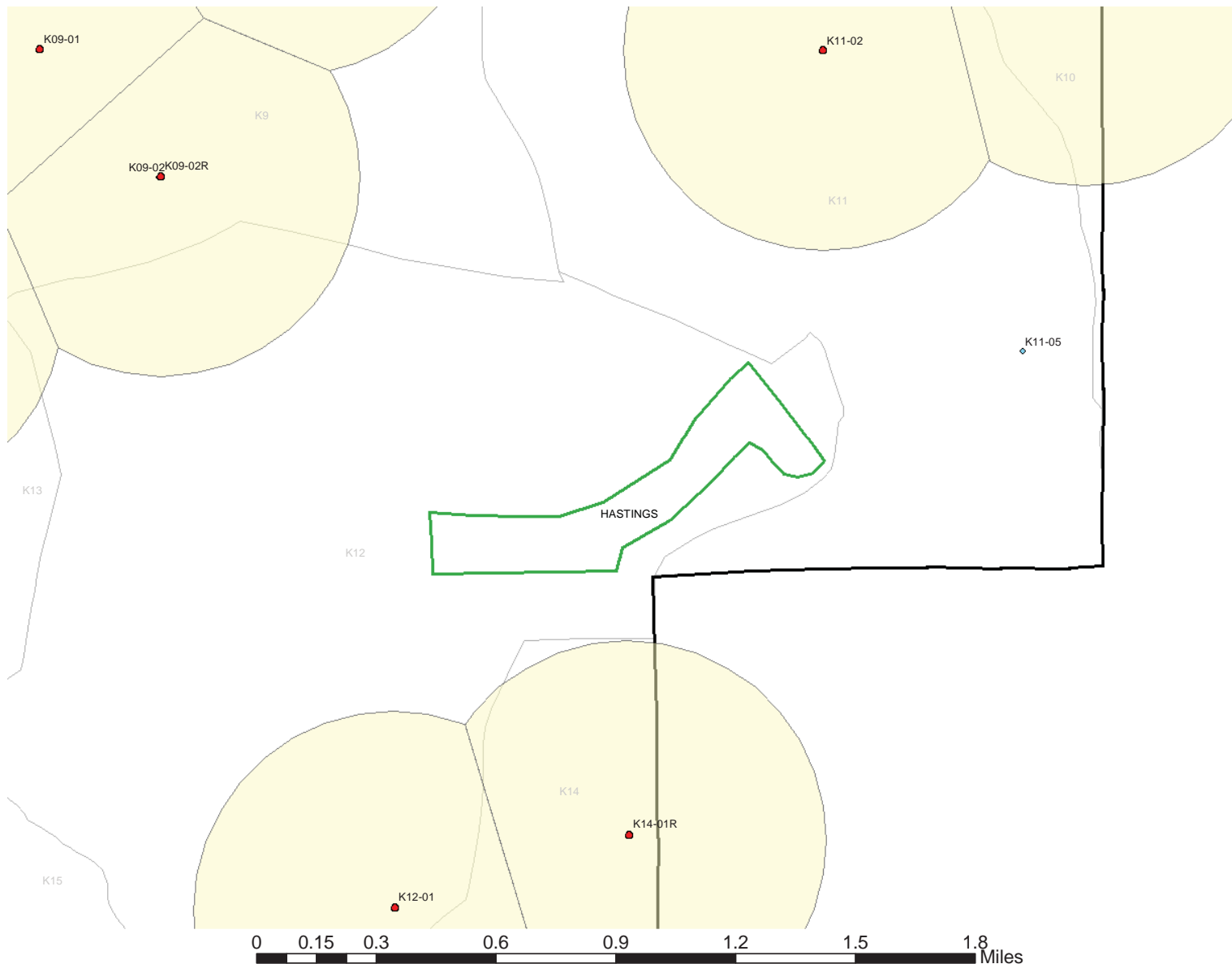
Ft. Benning Location Map



Prepared by DPW  
Environmental Management Division  
Fort Benning, GA  
April 2004

**Figure 24**





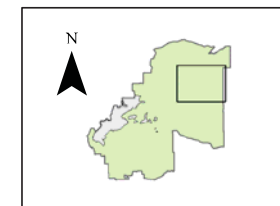
## Protected Species, Federal - Alternative I

### Legend

- RCW Clusters (Active)
- RCW Recruitment Clusters
- RCW Foraging Partitions
- Alternative I/Hastings Range Footprint
- Installation Boundary
- Training Compartments

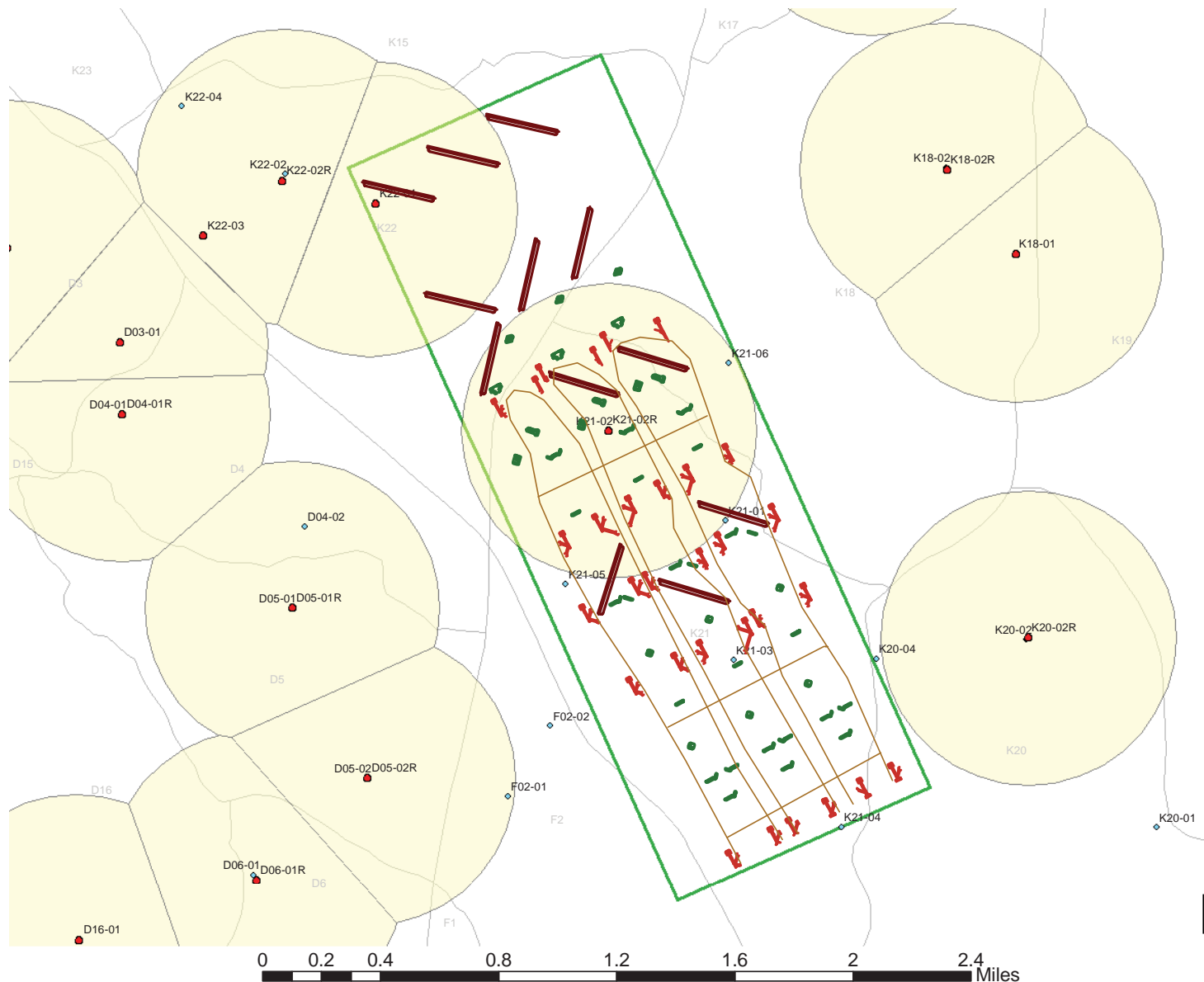
1:16,000

Ft. Benning Location Map



Prepared by DPW  
Environmental Management Division  
Fort Benning, GA  
April 2004

**Figure 26**



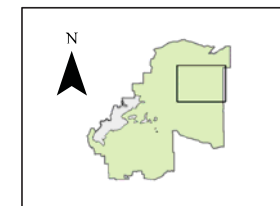
## Protected Species, Federal - Alternative II

### Legend

- RCW Clusters (Active)
- RCW Recruitment Clusters
- RCW Foraging Partitions
- Alternative II Range Footprint
- Installation Boundary
- Training Compartments

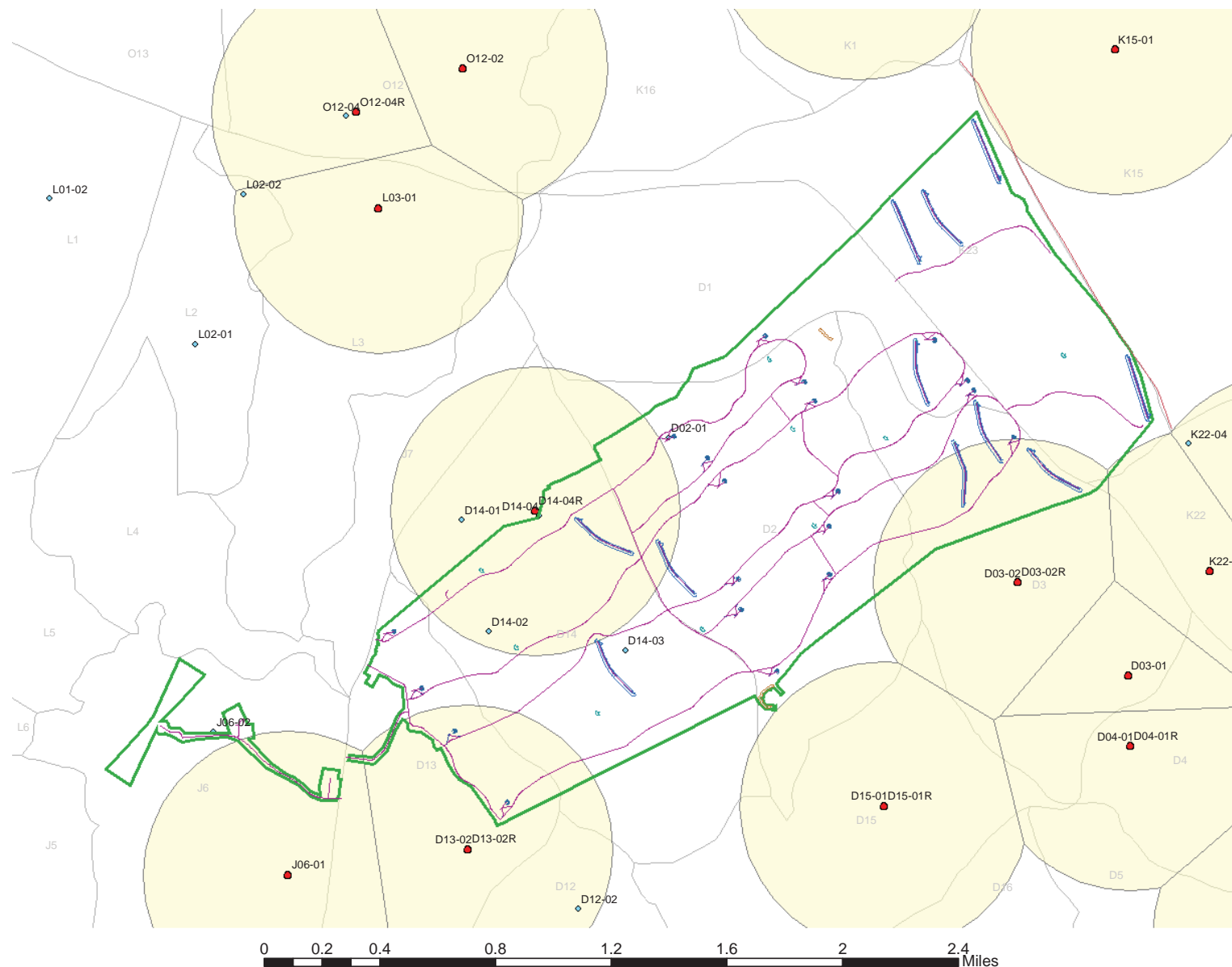
1:22,000

Ft. Benning Location Map



Prepared by DPW  
Environmental Management Division  
Fort Benning, GA  
April 2004

**Figure 27**



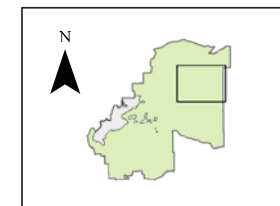
## Protected Species, Federal - Alternative III

### Legend

- RCW Clusters (Active)
- RCW Recruitment Clusters
- RCW Foraging Partitions
- Alternative III Range Footprint
- Installation Boundary
- Training Compartments

1:22,000

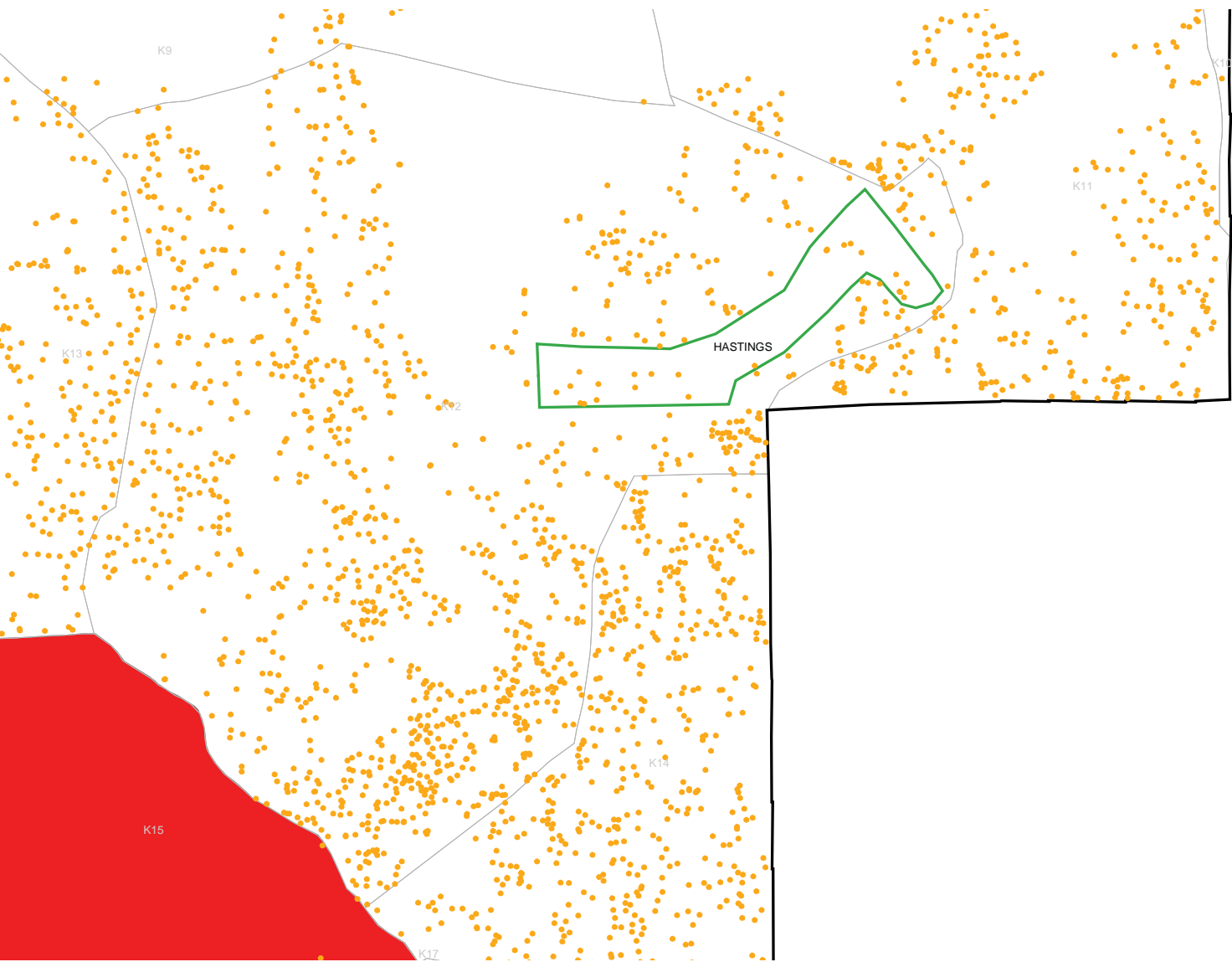
Ft. Benning Location Map



Prepared by DPW  
Environmental Management Division  
Fort Benning, GA  
April 2004






**Figure 28**





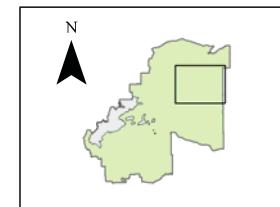
## Protected Species, State - Alternative I

### Legend

-  Gopher Tortoise
-  Alternative I/Hastings Range Footprint
-  Installation Boundary
-  Training Compartments
-  Dudded Impact Area

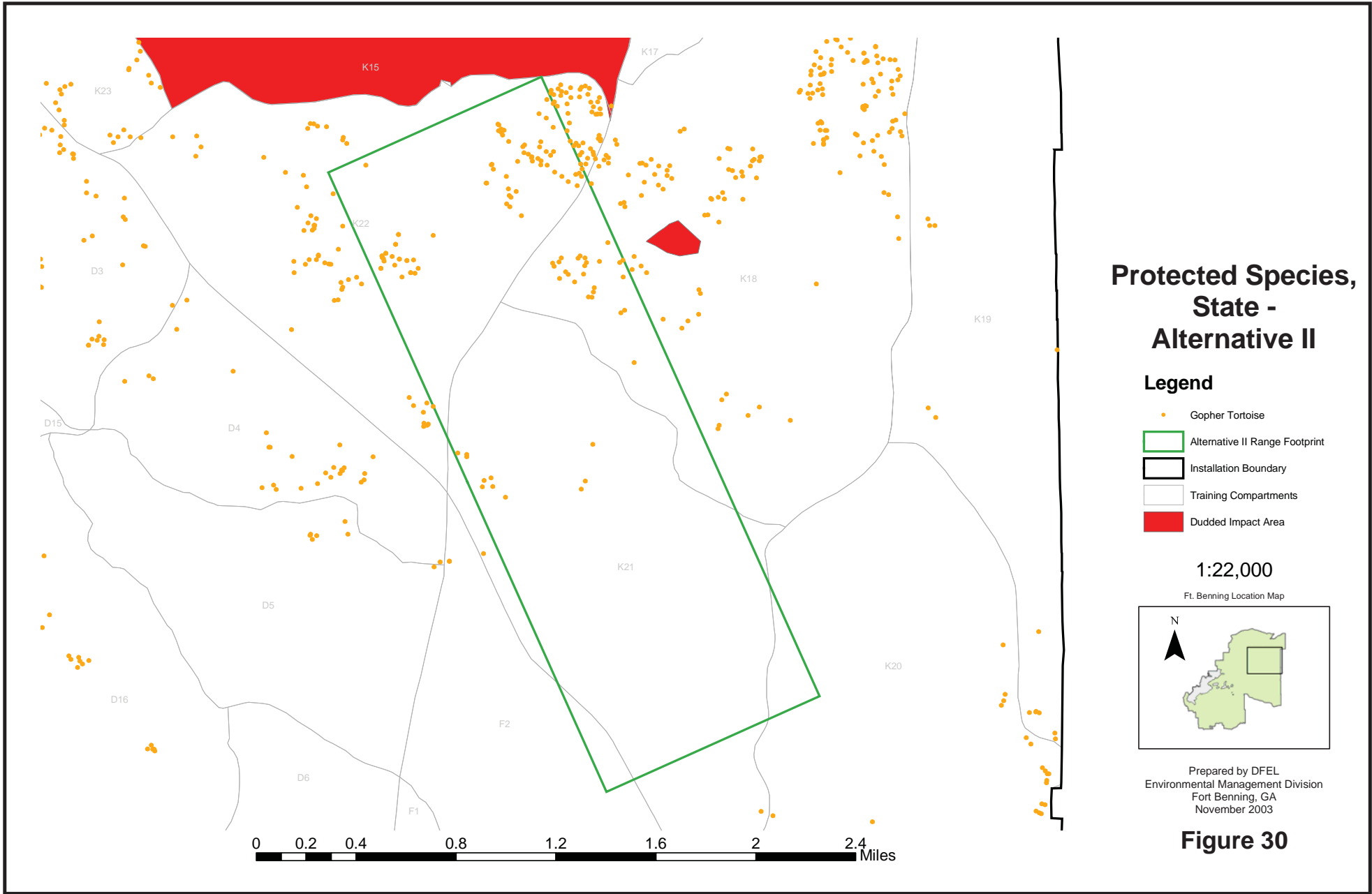
1:16,000

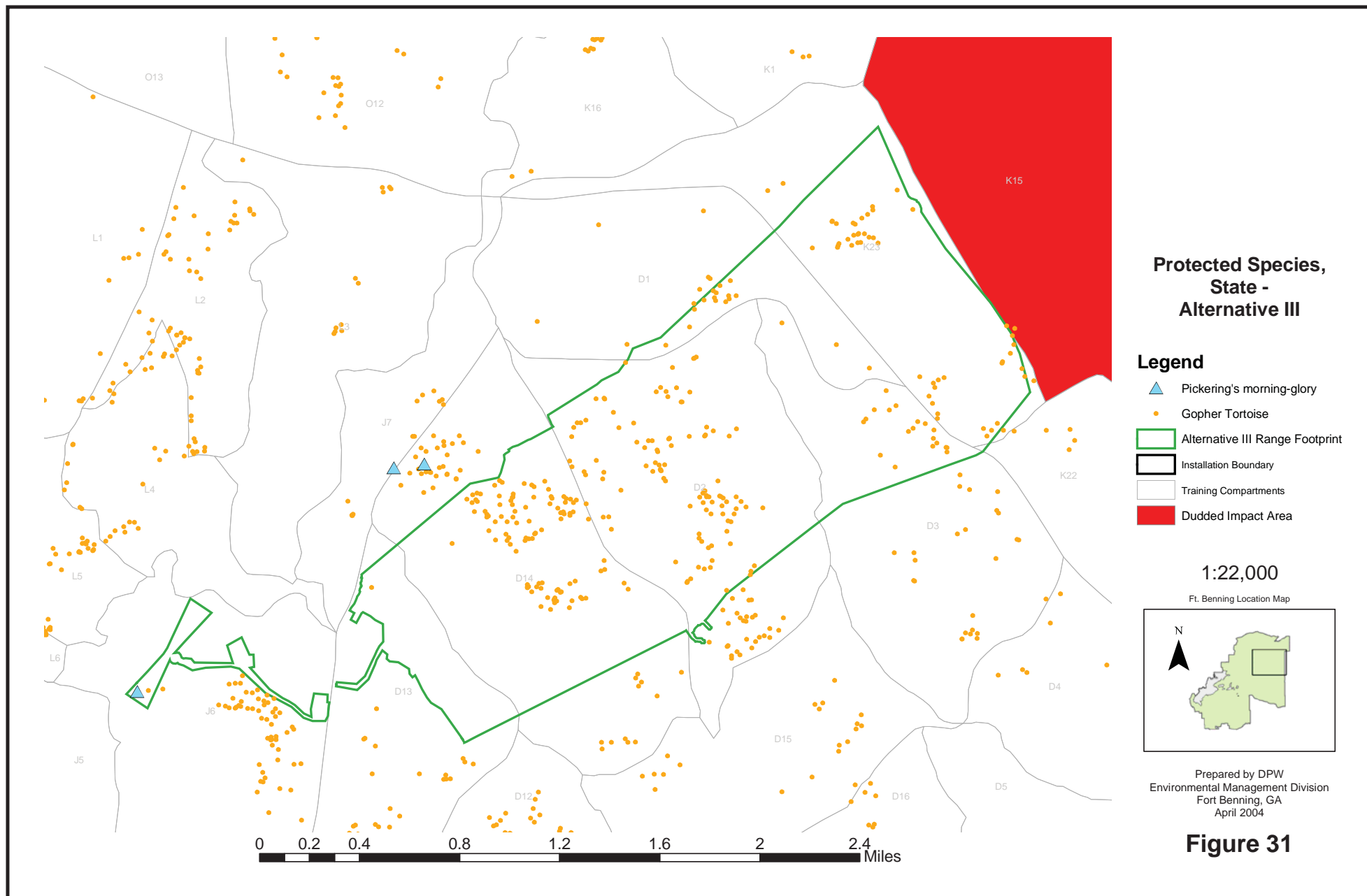
Ft. Benning Location Map

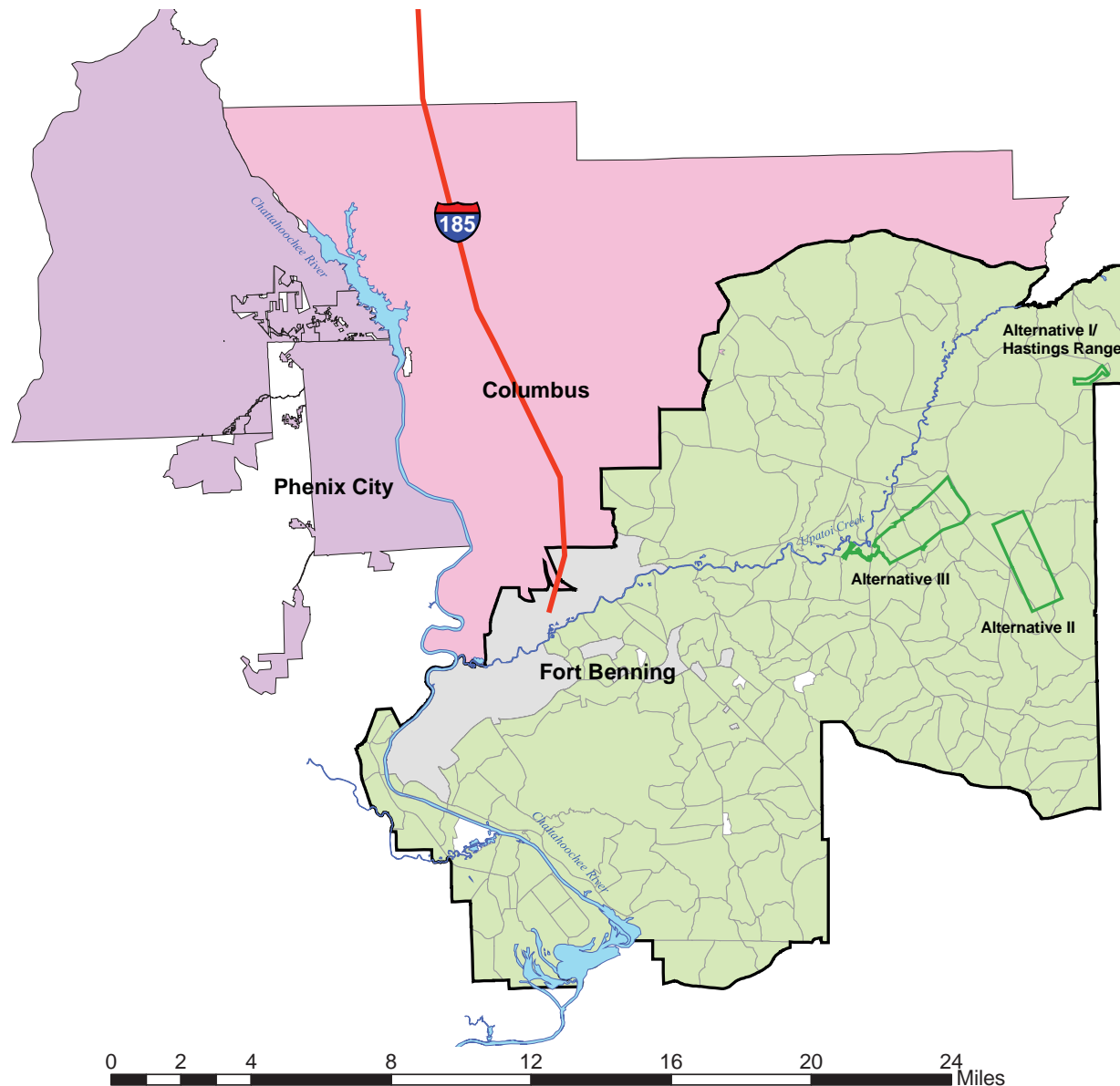


Prepared by DFEL  
Environmental Management Division  
Fort Benning, GA  
November 2003

**Figure 29**







## Socioeconomics, All Alternatives

### Legend

#### CITY

- Phenix City
- Columbus
- Roads
- Major Streams
- Installation Boundary
- Training Compartments
- Installation Cantonment Area



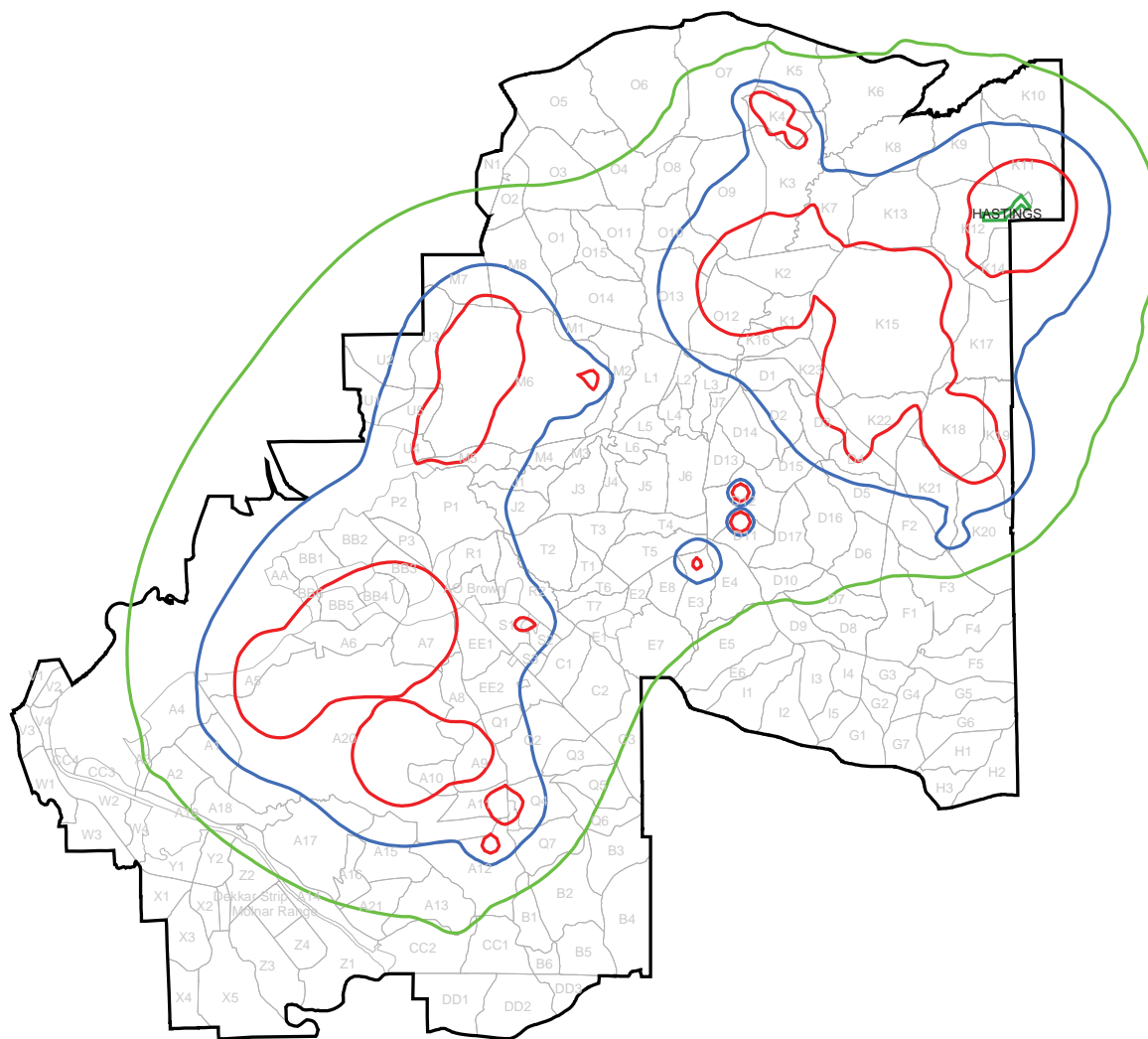
1:205,000

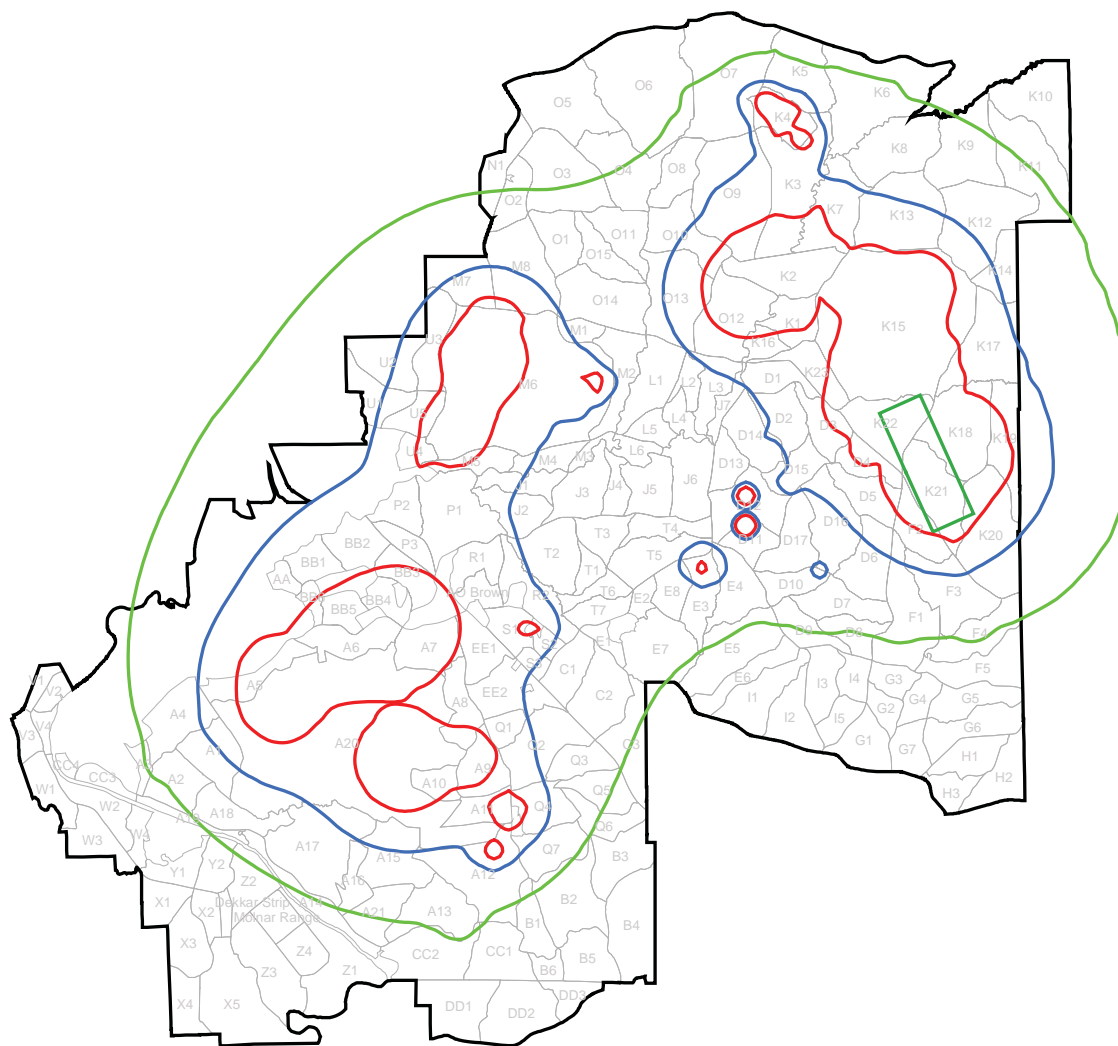
Ft. Benning Location Map



Prepared by DPW  
Environmental Management Division  
Fort Benning, GA  
April 2004

**Figure 32**





## Noise - Alternative II

### Legend

#### Noise Contours

#### Noise Zones

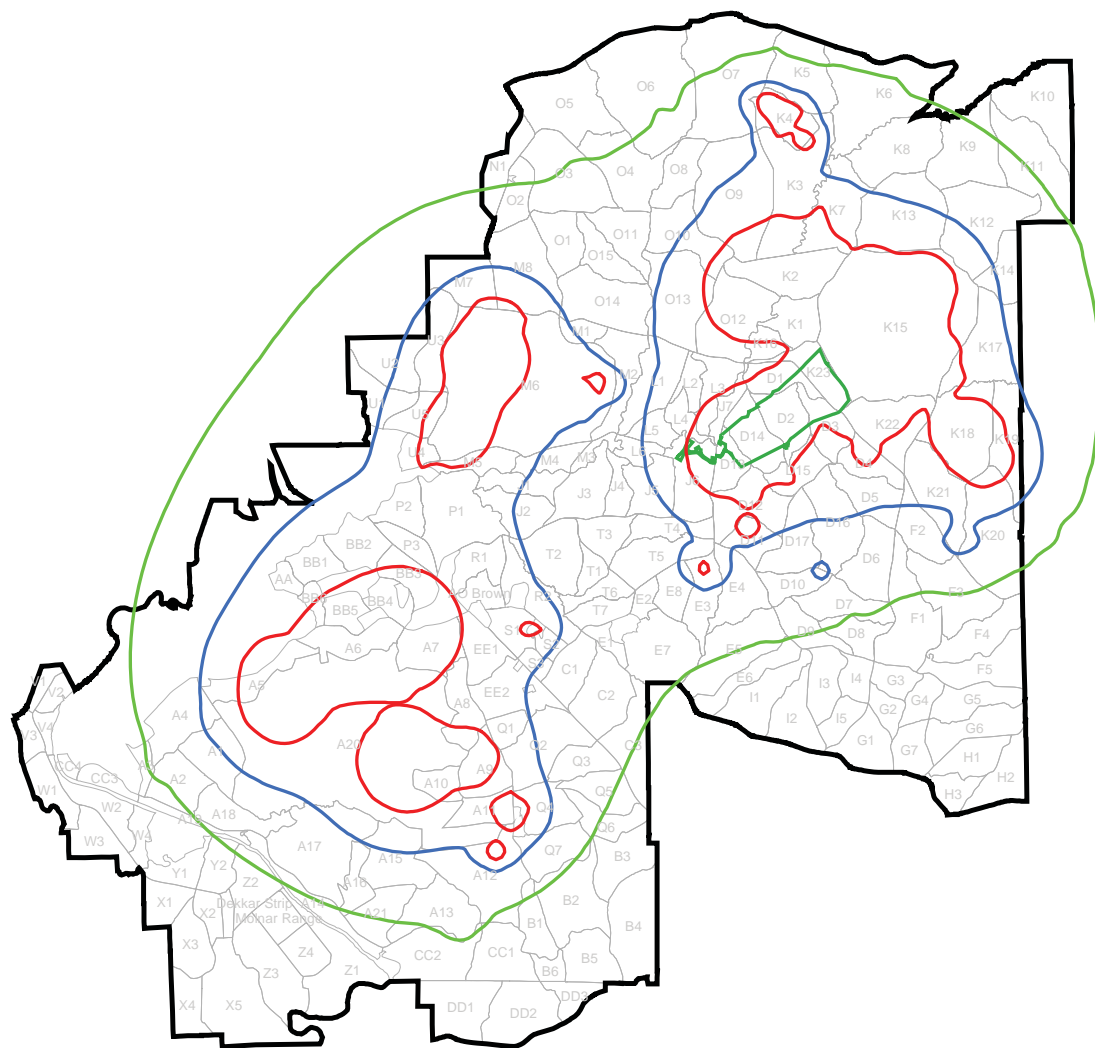
- 57 CDNL - LUPZ
- 62 CDNL - Zone II
- 70 CDNL - Zone III
- Alternative II Range Footprint
- Installation Boundary
- Training Compartments

N  
1:165,000  
Ft. Benning Location Map



Prepared by DFEL  
Environmental Management Division  
Fort Benning, GA  
November 2003

**Figure 37**



## Noise - Alternative III

### Legend

#### Noise Contours

##### Noise Zones

- ContourLine57
- ContourLine62
- ContourLine70
- Alternative III Range Footprint

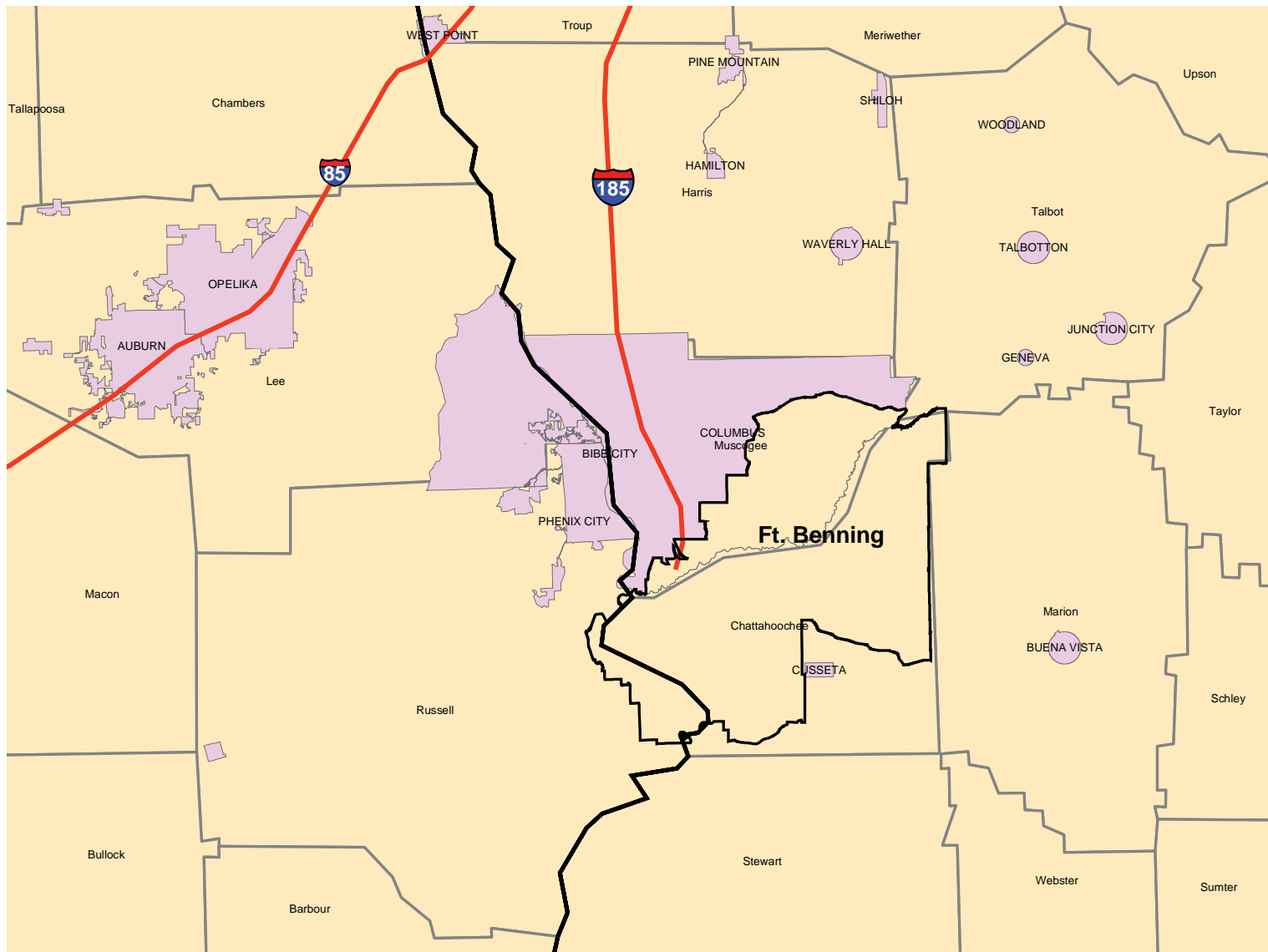
- Installation Boundary
- Training Compartments



Prepared by DPW  
Environmental Management Division  
Fort Benning, GA  
April 2004

**Figure 38**





## Region of Influence

### Legend

- Installation Boundary
- Roads
- States
- Cities
- Counties

N  
1:405,000

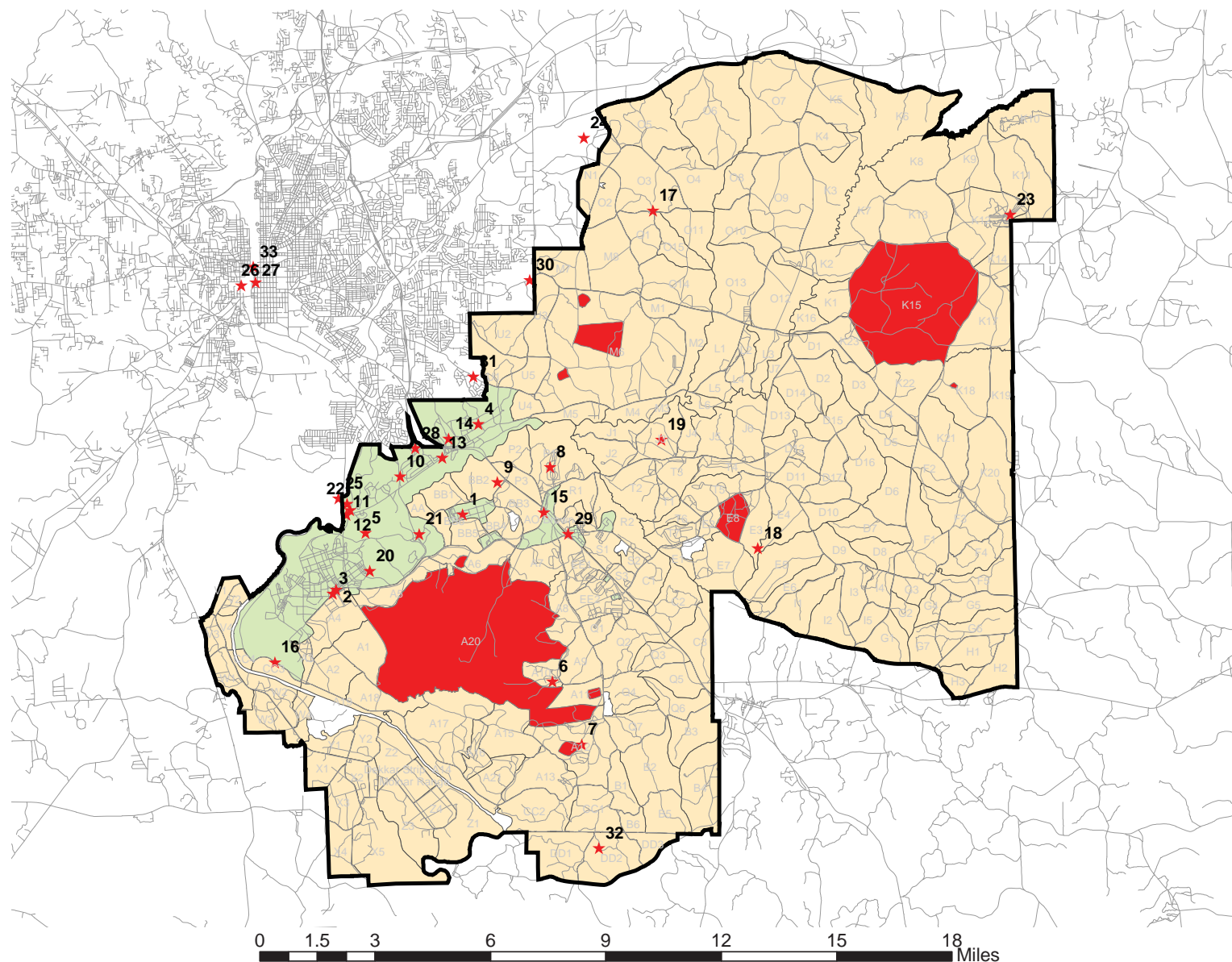
Ft. Benning Location Map



Prepared by DFEL  
Environmental Management Division  
Fort Benning, GA  
November 2003

**Figure 39**

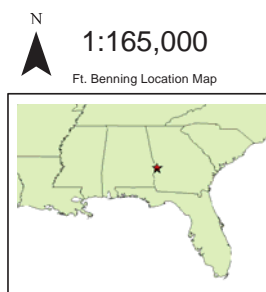




## Cumulative Projects

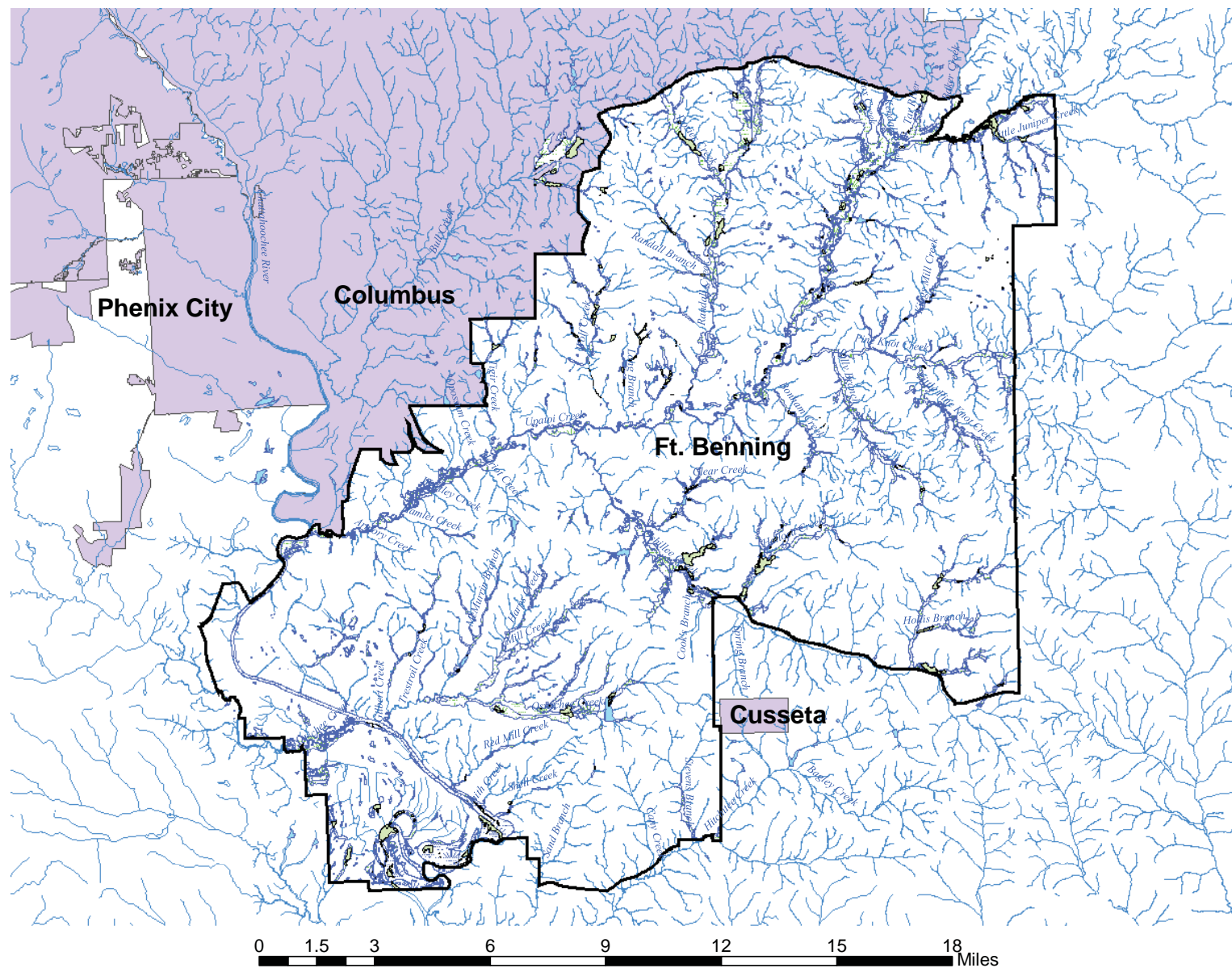
## Legend

- ★ Cumulatives
- Roads
- ▭ Installation Boundary
- ▭ Training Compartments
- ▭ Installation Cantonment Area
- ▭ Duded Impact Area



Prepared by DPW  
Environmental Management Division  
Fort Benning, GA  
April 2004

**Figure 40**



### Region of Influence for Wetlands and Water Quality

### Legend

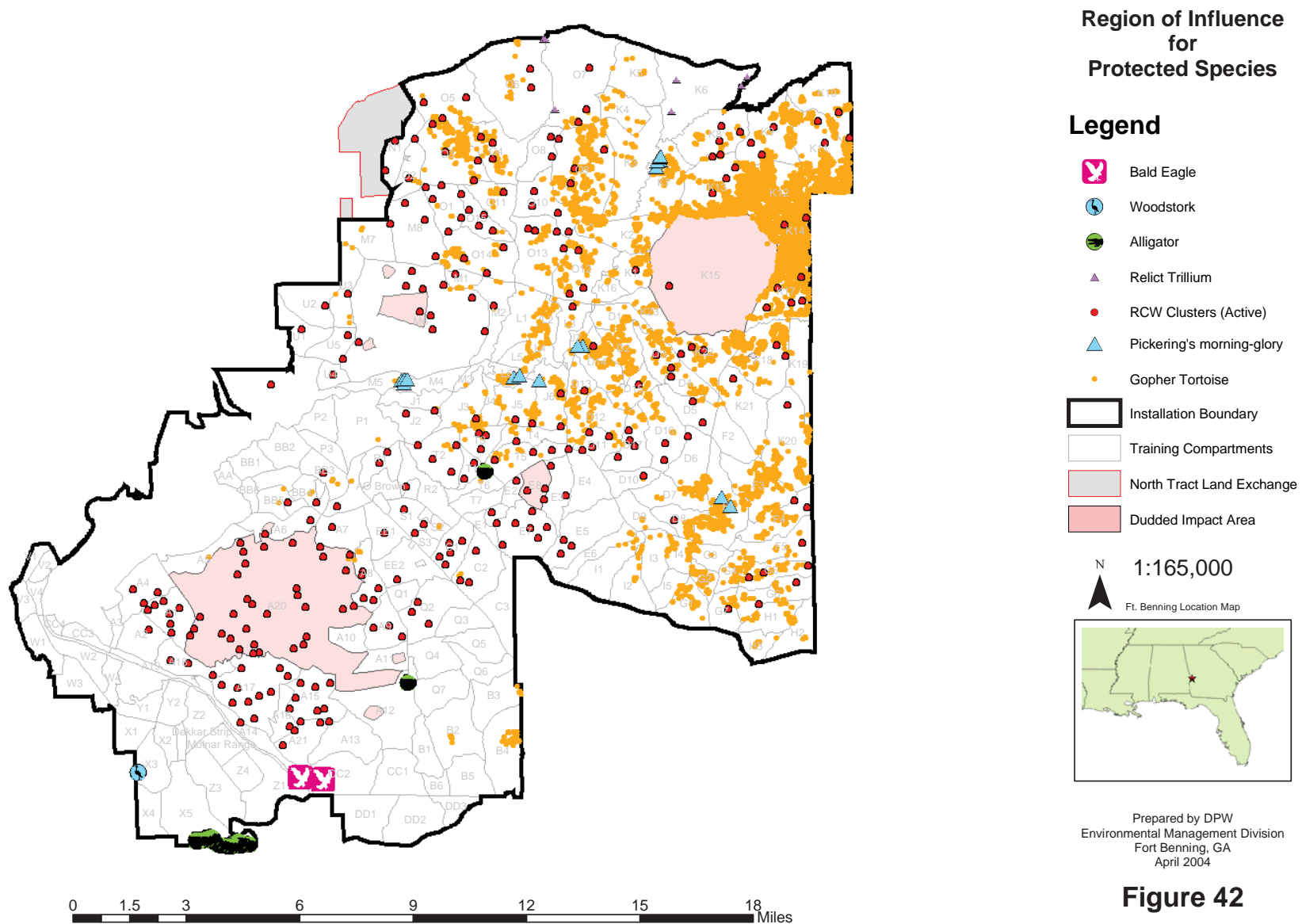
- 
- Installation Boundary
  - Ponds
  - Lakes
  - riverine
  - palustrine
  - lacustrine
  - Rivers and Streams
  - Cities

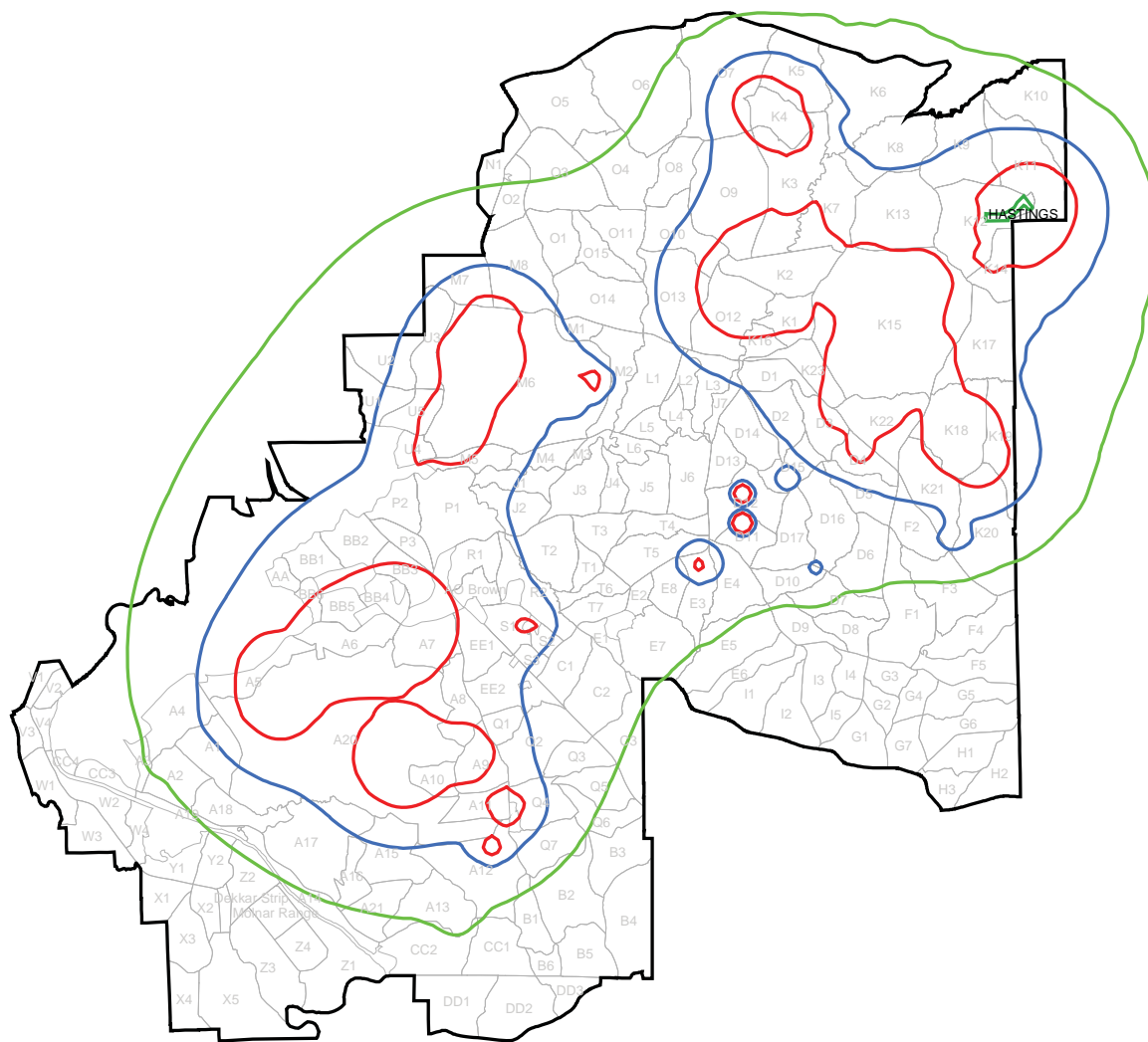
N  
1:165,000  
Ft. Benning Location Map

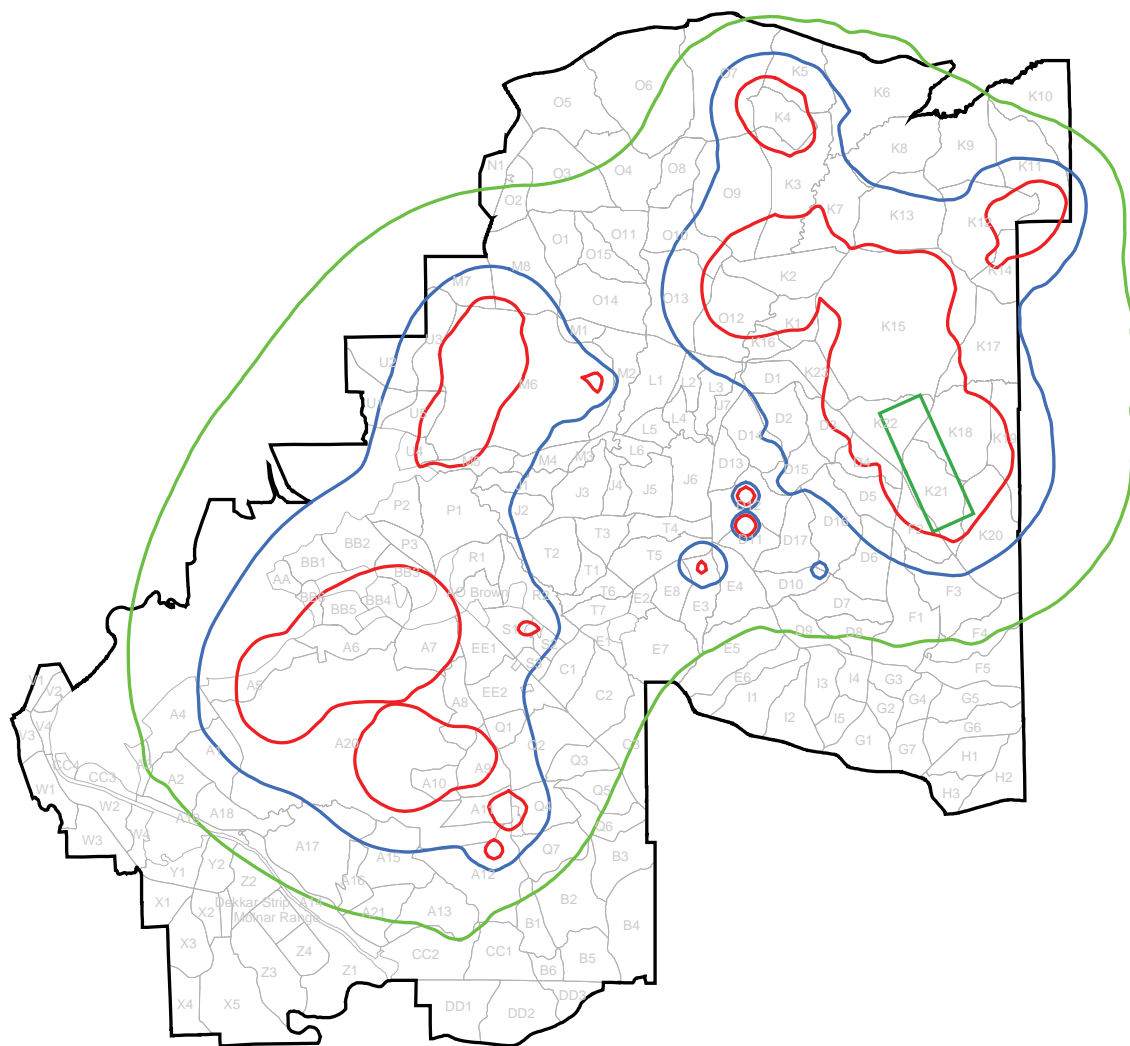


Prepared by DFEL  
Environmental Management Division  
Fort Benning, GA  
November 2003

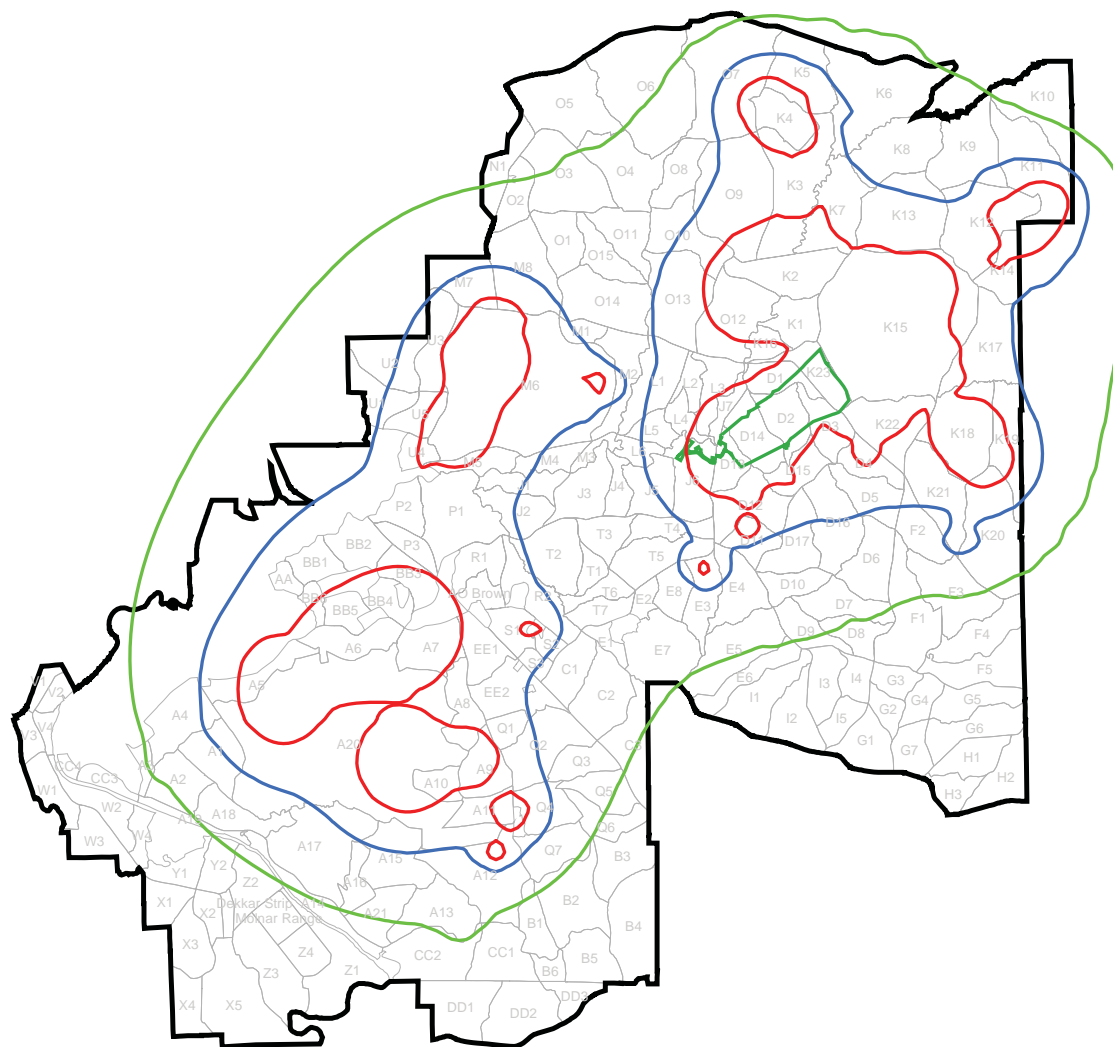
### Figure 41











## Cumulative Noise Effects - Alternative III

### Legend

#### Noise Contours

##### Noise Zones

- ContourLine57
- ContourLine62
- ContourLine70
- Alternative III Range Footprint
- Installation Boundary
- Training Compartments



1:165,000

Ft. Benning Location Map



Prepared by DPW  
Environmental Management Division  
Fort Benning, GA  
April 2004

0 1.5 3 6 9 12 15 18 Miles

**Figure 45**

